



# THE MAGNATE PROJECTS

**WORKING ON THE EDGE**

---

BUILDING DREAMS SINCE 2009

# COMPANY PROFILE

---

# Table of Contents

01

Vision, Mission & Values

11

Phases of  
construction

21

Key Associates  
Biographic

42

Completed Projects

03

Company Overview

14

Cost & Timed Saved

30

Services

54

Ongoing Projects

04

Working Process

16

Organogram

32

SWOT Analysis

70

Clientele

05

Business Description

20

Key Associates

33

Some Prestigious  
Projects

72

Key Facts

# VISION

To be a world-renowned Project Management Consultancy that creates maximum employment of such capability that can contribute to and elevate India's growth and success.



# MISSION

To provide superior project management services in every aspect of our client's dream civil and/or interior projects and make their dream a reality by making the execution completely stress-free and maintenance-free for them within optimum cost.



# VALUES



- **Passion & Determination** – we are fully committed in heart and mind to the projects we do.



- **Quality** – what projects we undertake, we finish them well



- **Integrity** – We are consistently open, honest, ethical, and genuine



- **Client Relations** – we create and maintain good, long-term relations with our clients



- **Customer Value Creation** – we deliver what we promise



- **Teamwork** – we channel our individual commitment into our teams towards our mission to accomplish our vision as only teamwork can make the dream work



- **Constant Improvement** – we are constantly learning and growing each day since 2006

# COMPANY OVERVIEW

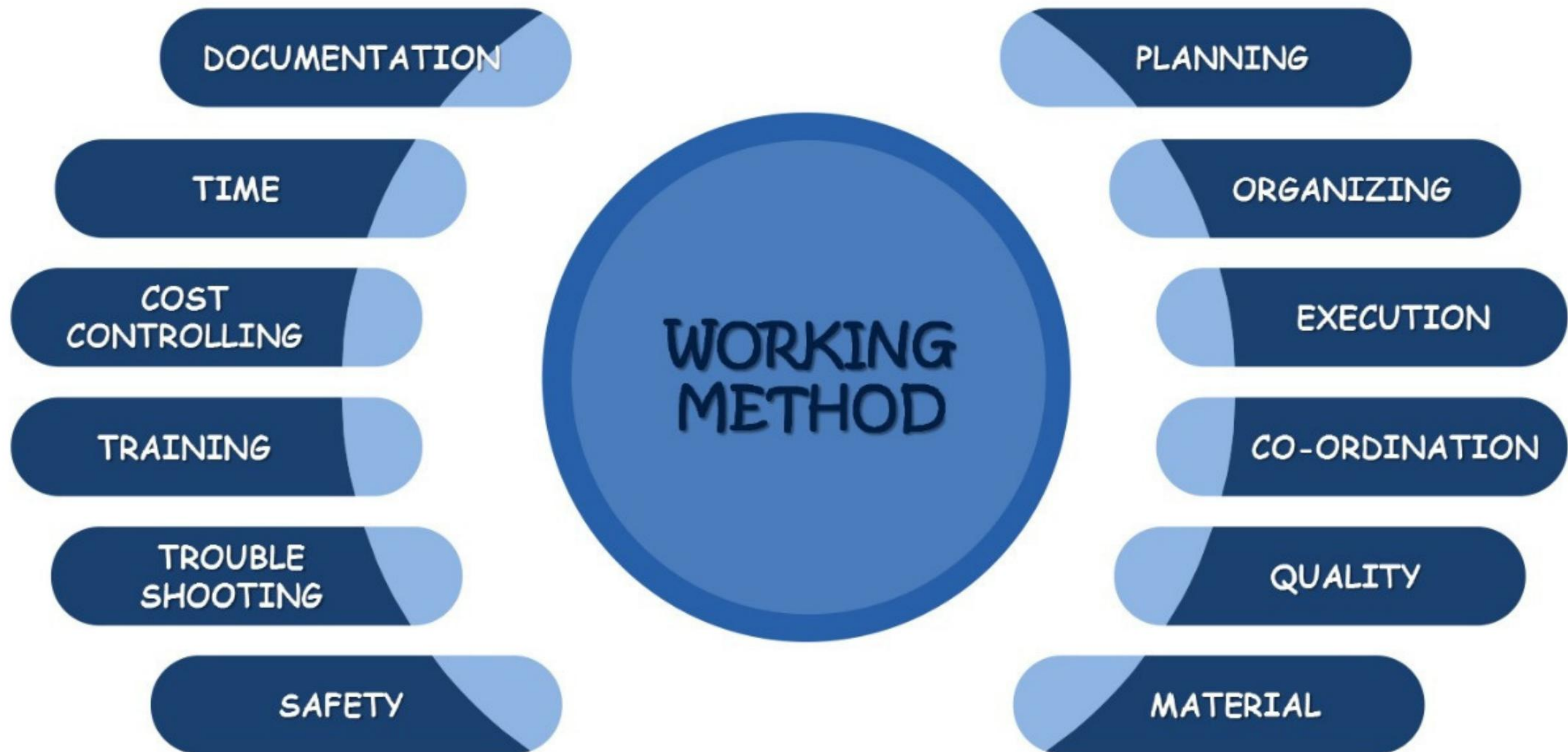
---

The Magnate Projects is engaged in the planning, execution, and completion of civil and interior projects. The company also provides annual maintenance services on a contract basis (AMC). The company primarily operates in Surat, Gujarat (India), and has 80+ associates as of January 2023.



# WORKING PROCESS

---



# BUSINESS DESCRIPTION

---



The Magnate Projects offers Project Management and Annual Maintenance services to a portfolio of civil and interior sites comprising of Residential, Commercial, Hospitality, Industrial, Healthcare and Resi-com. The services offered under project management services are planning and scheduling, coordination with consultants and vendors, material quantity analysis and procurement, risk analysis, execution, monitoring and control, documentation and safety protocols. For any project undertaken, the company first tries to understand the client's requirements, objectives and what they value. The company then plans the course of the entire project by scheduling the various activities involved in the execution using MS Projects (MSP) and predicts the time of completion of the project with respect to the prevailing environmental conditions. The roles and responsibilities are clearly defined and a team is formed to work on developing a strategy for the most efficient execution of the site. The team comprises a Site Engineer(s), a Senior Executive, a Planning Engineer and a Project Coordinator. The team, after planning the strategy, develops a Project Plan for smooth execution and completion of the site.

The Magnate Projects team coordinates with the various consultants including architects, structural designers, MEPF consultants, landscaping consultants and BMS consultants. Each design plan is checked by the company and clashes and/or errors (if any) are then communicated to the consultants and the client(s) which are further coordinated and resolved. The design plans are also studied by the team to identify areas where costs can be cut by suggesting an innovative alternative which is also coordinated with the various consultants for approval. Once the design plans are received, the PMC further details each drawing with technical material specifications which further minimizes confusion on-site during execution.



The company has a robust material procurement process where first the quantity of the material to be procured is calculated by the PMC project team. The technical specifications of the materials are then drawn together and the research for various vendors for each material by an in-house vendor management team begins. Research is also done by the team for the materials to identify all similar options that can be used in the budget decided. The suitable vendors are contacted for understanding the specifications they provide and also the initial quotations are obtained. These quotations are analyzed, understood, and compared by the PMC project team not only based on the rates specified but also on the basis of the professional rapport of the vendors in the market and the quality of their previous works. This is then documented in detail and presented to the client(s) for further discussions and finalization of the vendor as well as the materials. The materials to be procured are also checked and assessed as per the acceptable standards to ensure quality procurement. The company also provides the checking of the bills generated after the delivery of the materials on site to ensure that the client is billed correctly. Special focus is given on reducing wastage of material through innovative methods learned by the team over the years to further save cost. Our independence and neutrality ensure a product choice according to the latest technical requirements and market analysis.

The Magnate Projects' team performs a Risk Analysis of the site undertaken during the planning phase and includes it in the Project Plan. This includes surveying and understanding the various activities that have to be conducted on the site. The possible risks are then recognized and further analysis is done using James T. Reason's famous Bow-tie method where not only the causes of the issues are identified but also the actions to be taken to control them are planned. All of these are documented in the risk register and provided to the site engineer of the PMC team who keeps a constant check at each stage. The data collected and the practical knowledge gained by The Magnate Projects through the management of over 100 sites serve as a strong foundation for starting the Risk Analysis for any new project ensuring maximum site safety and efficient execution.

All the planning done is then put into action in the execution phase by the appointed team. During execution, the PMC oversees all the site activities to ensure that the project is completed with maximum quality and within the time and budget target. The roles and responsibilities are defined very clearly (as shown in Table below) to avoid any confusion during this phase and ensuring ownership of the activities.

Sr. No.	Execution Phase Activities	Responsibility
1	Placing material order in advance as per the calculated quantity	Site Engineer
2	Correctly placing the material and Quality check	Site Engineer
3	Ensuring that the agencies work according to the IS code methods & techniques	Site Engineer
4	Ensuring usage of right materials at the right place	Site Engineer
5	Reducing wastage of reusable materials	Site Engineer
6	Ensuring safety measures are followed by all workers on-site	Site Engineer
7	Identifying and notifying site specific issues	Site Engineer
8	Following the detailed checklists	Site Engineer
9	Risk Register Updates	Site Engineer

Sr. No.	Execution Phase Activities	Responsibility
10	Ensuring cleanliness on site	Site Engineer
11	Communicating any additional requirements in advance	Site Engineer
12	Continuous follow ups with all the vendors	Site Engineer & Project Coordinator
13	Documentations	Site Engineer & Project Coordinator
14	Coordinating between client requirements and on-site execution	Site Engineer & Project Coordinator
15	Supervising all the activities of Site Engineer on a daily basis	Senior Executive
16	Supervising all the coordinating activities of the Project Coordinator on daily basis	Senior Executive
17	Ensuring the right data is obtained for documentation	Senior Executive
18	Finding a solution to site specific issues raised	Senior Executive

The Magnate Projects' documentation is consistent and precise providing real time updates of the site directly to the client. The documentation starts with the MSP Schedule created by the appointed Planning Engineer. The everyday activities performed on site are recorded in detail with photographs in the DPR (Daily Progress Report) on the "Magnate" app by the Site Engineers which can be accessed anytime by the client.

The Project Coordinator prepares the weekly and monthly reports from the key highlights of the week and month respectively along with the decisions that need to be taken and the agencies which have been offered the work order. The reports comprise of the progress in the various activities shown in form of graphical charts along with the targets of the next week/month after coordinating and confirming them with the contractors. In the case of construction sites, the amount of concrete and steel consumed along with requirements for the upcoming week is also mentioned in the weekly reports. Any changes in the initial design plan are specified in the reports. The documentation further includes the comparison of any quotations received or changed. The comparison is not just of the rates offered by each vendor but also a detailed comparison of the technical specifications offered by the vendors.

The purpose of the extensive documentation is to relieve the client from the constant stress of visiting the site to know the real-time condition.

Maximum safety on-site is supervised and ensured by The Magnate Projects. Firstly, mandatory insurance for the Labourers at work is obtained from the agencies before the work commences. Secondly, for preventing any accidents provision of safety helmets, safety jackets, safety belts and safety shoes on-site for Site Engineer as well as the Labourers are made. Thirdly, in case of occurrence of an accident, to control its impact, a first-aid box, and a fire extinguisher is placed on the site along with a list of all emergency contacts like ambulance, fire brigade, etc. Lastly, The Magnate Projects takes additional measures during execution to prevent any accidents like ensuring the quality of the temporary electric point provided for activities (floor polishing, tiles cutting, etc), ensuring flammable materials are kept away from fire or electrical outlets, using warning signage where needed (periphery, clear doors/windows, wet floor etc), ensuring use of safety nets and using barricade taping where needed (near lift shaft, etc), supervising the techniques used on tools by laborers at work among other measures. The Magnate Projects also offers Annual Maintenance Contracting for Commercial as well as residential buildings. The contract includes surveying the site and collecting information on all existing services to understand the site's current condition.

Specific personnel is assigned from the company's AMC team for bimonthly visits. The existing site services are then divided under cyclical, requiring annual maintenance, and non-cyclical, requiring maintenance when damaged. A document of the same is made with the record of all the dates of maintenance, warranty, and guarantee.

The agencies are intimidated 10 days prior to the actual maintenance date to ensure regular and timely maintenance. In case, any repair work and/or cyclical maintenance is identified by the personnel, coordination with the respective agency is done and the repair and/or maintenance work is supervised by them. Finally, the bill generated by the agencies is also cross-checked by the personnel to avoid any mistakes or overcharging.

The company offers its services in Pan India and has worked in seven states: Gujarat, Rajasthan, Maharashtra, Punjab, Tamil Nadu, Uttar Pradesh, and Delhi-NCR. The services provided are similar in all the states. In addition to the above, having executed over 100 sites hence developing an eye for interior products, Magnate also offers Personal Shopper services for the vendor products selection all around the globe.



# PHASES OF CONSTRUCTION

---

## A. PRE CONSTRUCTION STAGES –

- Analyze Client's project related requirements
- Develop project control systems
- Finalization of project organization chart.
- Establishment of project communication and reporting system
- Preparation of works breakdown structure
- Preparation of Project Master Schedule with base line
- Preparation of Design/ Drawings deliverables schedule
- Feedback on the Master Budget of the project
- Co-ordination and follow-up with Architect and other design consultants for their inputs
- To identify and suggest consultants/designers for specialized requirements
- Lead project meetings as necessary for review of progress
- To set up track, monitor a design deliverable schedule
- Checking & verification of designer's submission Cost control during all stages of design and design development (Except material procurement agencies! contractors finalization)

## **B. CONSTRUCTION STAGES –**

- Full time supervision of All construction works/activities for the project
- On-site design co-ordination and issue of drawings clarifications
- Organize approval to contractors shop drawings, product data sheets, samples.
- Referment of works breakdown structure.
- Monitoring the progress of work with the Master construction schedule
- Prior flagging of anticipated bottlenecks and analysis of its reasons
- Day to day correspondences including contractual issues
- Management of design changes and extra items
- Prepare QA QC plan and Method Statement
- Quality assurance and control to ensure conformance to drawings and specifications.
- Provide GFC drawings to respective contractors and keep updated record issued.
- Scrutinize and check working drawings received from Architects designer
- Organize Progress review meetings on weekly basis.
- Collect, review and maintain all the records of contractors daily progress reports
- Submitting Weekly and Monthly progress reports

### **C. POST CONSTRUCTION STAGES –**

- Advice about probable date of Substantial Completion
- Preparing & addressing the schedule of defects.
- Provide assistance in Testing and commissioning of the facility
- Collection and integration of various O & M manuals, commissioning & test certificates
- Reconciliation and Certification of Final bills of contractors, suppliers, vendors and consultants
- Preparation of project close-out report including learning
- Collate and verify all As-built drawings
- Addressing any queries during defects liability period



# COST SAVED

*WITHOUT  
PMC*

*WITH PMC*



Limited idea  
about market  
research

No clear  
guidance

Bill checking of  
multiple  
agencies.

wastage of  
material on site



Appropriate  
market  
research

Will guide with  
best vendor  
options

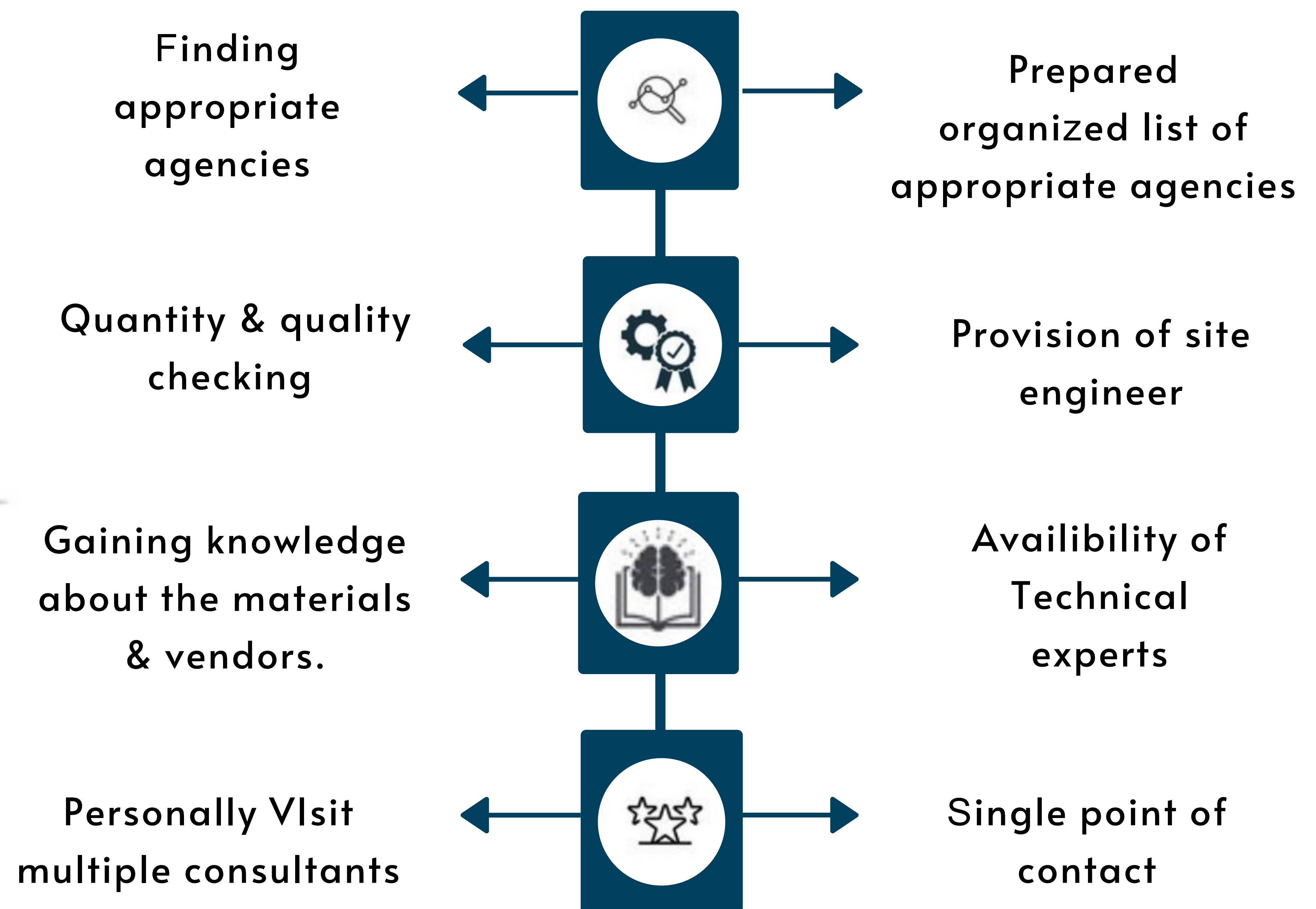
Intense Cross  
checking of each &  
every bill

Proper  
supervision of  
materials used  
on site

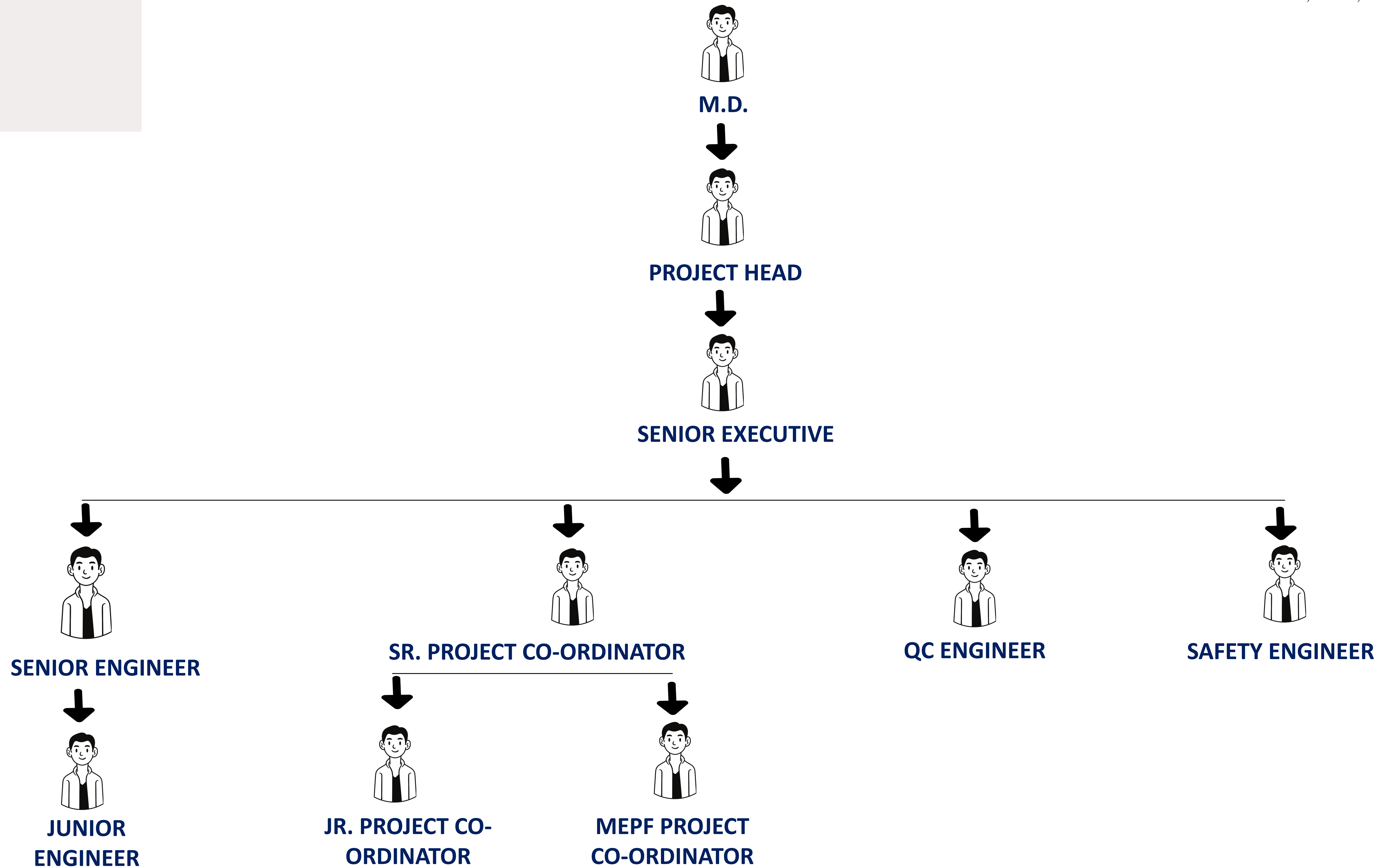
# TIME SAVED

*WITHOUT  
PMC*

*WITH PMC*



# ORGANOGRAM



# ROLES & RESPONSIBILITY

---



## PROJECT HEAD

- Plan all construction operations and guide the team.
- Coordination with client, architects, sub-contractors and other various teams associated with projects Resource (Material, manpower & equipment) identification mobilization and management.
- Ensure all compliances with relevant building and safety codes.
- Attending meetings with principle architect and client regarding key issues.
- Monitor the progress and timeline of project. Preparation of weekly & monthly reports.
- Checking and authorizing bills. Regular communication with CEO regarding project's progress
- Sorting unresolved issues

## SENIOR EXECUTIVE

- Project planning and schedule reviewing with concerned stakeholders.
- To monitor the day-to-day execution of checking and authorization of DPRs with site photos.
- Quality assurance
- Quantity estimation verification Coordination with client, architects, and other various teams associated with projects
- Attending pre-scheduled site meetings & progress review meetings
- Checking and authorizing bills. Troubleshooting

## SENIOR ENGINEER

- To monitor the day-to-day execution of the project and checking of supervisor's DPRs with site photos.
- Checking of Project Drawings and maintaining documents
- Quantity estimation as per drawing Maintaining project documents on site.
- Scheduling meetings regarding discussion of key points related to execution work.
- Coordination with senior engineer. Checking bills of contractors and vendors

## **JUNIOR ENGINEER**

- To monitor the day-to-day execution of the project and prepare DPRs with site photos.
- Man Power management according to project activities.

## **SR. PROJECT CO-ORDINATOR**

- Checking of Project Drawings and coordination related to drawings with concerned consultants.
- Checking of the master programme schedule.
- Checking of weekly & monthly reports.
- Quantity estimation as per drawing.
- Coordination with a senior engineer.

## **JR. PROJECT CO-ORDINATOR**

- Preparation of master programme schedule.
- Preparation of weekly & monthly reports.
- Quantity estimation as per drawing.
- Maintaining project documents. Scheduling meetings and emails.
- Coordination with a Project Co-ordinator

## **MEPF PROJECT CO-ORDINATOR**

- Review of MEPF design drawings.
- Coordination with a MEPF Consultant and client.
- Maintaining project documents and Scheduling meetings and emails for MEPF services.

## QC ENGINEER

- Review quality of all materials at the site and ensure compliance with all project specifications and quality and collaborate with the department for all material procurement and maintain a quality of materials.
- Taking care of QA/QC documents of the entire project including certificates, calibration, test results, inspection requests, non-compliance reports and site instruction/observations, permanent materials delivered and other QA/QC documents.

## SAFETY ENGINEER

- Creating and enforcing safety guidelines and programs
- Preparing all safety reports.
- Verification of tools and equipment to ensure good quality
- Promoting safe practices on site.

# KEY ASSOCIATES



**Associates - 80+ Team Members**

SR NO.	NAME	JOB TITLE	BOARD
1	Mr. Chirag Shah	Founder & M.D.	Executive Board
2	Mr. Chintan Vora	Project Head	Executive Board
3	Mr. Sunil Khaniya	Senior Associate	Senior Management
4	Mr. Gaurav Shah	Senior Associate	Senior Management
5	Mr. Pratik Kuriya	Senior Associate	Senior Management
6	Mr. Vishal Prajapati	Senior Associate	Senior Management
7	Mr. Yash Rana	Senior Associate	Senior Management
8	Mr. Nikunj Chotaliya	Senior Associate	Senior Management
9	Mr. Dingat Akhani	Senior Associate	Senior Management
10	Mr. Pinkesh Kataria	Senior Engineer	Senior Management
11	Mr. Bhavesh Bhagat	Senior Engineer	Senior Management
12	Mr. Ronak Shah	Senior Engineer	Senior Management
13	Mr. Ankit Mavani	Senior Engineer	Senior Management
14	Mr. Jaivik Babria	Senior Associate	Senior Management

# KEY ASSOCIATES BIOGRAPHIES



## MR. CHIRAG SHAH

**JOB TITLE: FOUNDER & MD**

**FIELD EXPERIENCE - 15+ YEARS**



Mr. Shah's professional journey in the field of Project Management services for Civil and Interior projects is a testament to his expertise, entrepreneurship, and leadership. Beginning as a Site Engineer in 2006, Mr. Shah gained hands-on experience in overseeing and managing construction activities on-site. Drawing from his experience and practical knowledge, Mr. Shah took a bold step towards entrepreneurship in 2009 by founding his own consultancy, The Magnate Projects. Under Mr. Shah's leadership, The Magnate Projects has thrived, successfully delivering projects in various sectors including Residential, Commercial, Industrial, Hospitality, Institutional, and Resi-Com (Residential-Commercial). Beyond his role as a project manager, Mr. Shah has also established himself as a Real-Estate Valuer approved by the Government of India. He leads a diverse group of professionals including Civil Engineers, Interior Designers, and Project Managers, collectively referred to as the "Magnate family." This additional expertise showcases his commitment to enhancing his skill set and contributing to the broader real estate industry. Mr. Shah has worked in Project Management services for Civil and Interior projects since 2006. Being a Civil Engineer, he started his journey as a Site Engineer where he applied his technical knowledge to practice. While acquiring ample experience and practical knowledge. He decided to valiantly seize this opportunity by starting his consultancy, The Magnate Projects, in 2009 which has been successfully delivering projects across multiple sectors including Residential, Commercial, Industrial, Hospitality, Institutional, and Resi- Com. He has also established himself as a Real-Estate Valuer, approved by the Government of India. He successfully leads his Magnate family comprising of Civil Engineers, Interior Designers and Project Managers towards accomplishing the Vision.



# MR. CHINTAN VORA

**JOB TITLE: PROJECT HEAD**

**FIELD EXPERIENCE: 10+ YEARS**



Mr. Vora's journey at Magnate has been a remarkable one, spanning nearly a decade of dedicated service. He initially joined the company in 2014 as a Site Engineer, where he laid the foundation for his future success. Through his diligence, passion, and commitment to excellence, he quickly ascended the ranks to become a Senior Engineer. In 2019, recognizing his exceptional skills and leadership qualities, Mr. Vora was entrusted with the role of Project Head. Under his guidance, multiple teams have thrived, contributing to the seamless execution of projects.. Mr. Vora's academic foundation includes a Bachelor's degree in Civil Engineering from Birla Vishvakarma Mahavidhyalaya (Vidyanagar). Prior to joining Magnate, he honed his skills as a Site Engineer at Happy Home Group in Surat. He's led 60+ successful projects across cities like Mumbai and Chennai, showcasing his adept leadership and technical skills.

## MR. SUNIL KHANIYA

**JOB TITLE: SENIOR ASSOCIATE**

**FIELD EXPERIENCE - 15+ YEARS**



Mr. Khaniya has been an integral part of The Magnate Projects since 2017 when he joined as a Site Executive. With steady progression, he advanced to the role of Senior Executive in 2019 and currently serves as an Associate. His expertise shines through the successful execution of 17+ interior projects across Surat, Mumbai Kim, and Chikli. Mr. Khaniya's leadership is evident in his mentorship of 20+ junior engineers. Mr. Khaniya is known for maintaining good relationships with clients, vendors, and agencies has been instrumental in project success. Beyond his corporate roles, Mr. Khaniya brings a decade of entrepreneurial to his contributions, further enriching his impact at the company.

## MR. GAURAV SHAH

**JOB TITLE: SENIOR ASSOCIATE**

**FIELD EXPERIENCE - 05+ YEARS**



Mr. Shah's journey with The Magnate Projects began in 2017 when he joined as a Site Executive. In this role, he demonstrated his ability to oversee and manage construction activities efficiently. Recognizing his potential, he was promoted to the position of Senior Executive within a year. He has successfully delivered over 15+ interior projects across various States/ Cities like Mumbai, Surat, Ankleshwar, Chennai, Kolkata, etc., showcasing his strong project management skills. As a Senior Executive, Mr. Shah's responsibilities expanded, allowing him to contribute more substantially to project management and coordination. His dedication and consistent delivery of successful outcomes led to his elevation to the role of Associate in 2019. A standout attribute that sets Mr. Shah apart is his specialized expertise in the technical analysis of materials.



## MR. PRATIK KURIYA

**JOB TITLE: SENIOR ASSOCIATE**

**FIELD EXPERIENCE - 06+ YEARS**

Mr. Kuriya's tenure at The Magnate Projects has been marked by his dedication, progression, and exemplary skills in the field of construction and project management. His journey within the company began in 2017 when he joined as a Site Engineer. Over the years, he has exhibited remarkable growth and contributions to the organization. In 2019, Mr. Kuriya's contributions and potential were recognized, leading to his promotion to the role of Associate. This promotion marked a significant milestone in his career, reflecting his ability to excel in his responsibilities and make a meaningful impact on projects. Moreover, Mr. Kuriya's skill set extends beyond technical expertise. He excels in coordination, communication, and client relationship management. His ability to maintain positive relationships with clients enhances the overall project experience and contributes to the company's reputation.

## MR. VISHAL PRAJAPATI

**JOB TITLE: SENIOR ASSOCIATE**

**FIELD EXPERIENCE - 07+ YEARS**

Mr. Prajapati's journey at The Magnate Projects showcases his growth, experience, and contributions to the company's interior projects. His association with the company began in 2015 when he joined as a Site Executive, and over the years, he has evolved into the role of an Associate, leaving a significant mark on the organization. In recognition of his dedication, skills, and contributions, Mr. Prajapati was promoted to the position of Senior Executive in the company, showcasing the trust and confidence the company had in his abilities. In 2020, Mr. Prajapati's journey within the company reached another milestone as he was elevated to the role of Associate. Throughout his tenure, Mr. Prajapati has successfully delivered a total of 7 interior projects, all within Gujarat.



## MR. YASH RANA

**JOB TITLE: SENIOR ASSOCIATE**

**FIELD EXPERIENCE - 06+ YEARS**



Mr. Rana's with the company began in 2017, and over the years, he has progressed to the position of Senior Executive, leaving a significant imprint on the organization. Starting as a Site Engineer, Mr. Rana took on the role of overseeing and managing construction activities on-site. After two years of contributing as a Site Engineer, Mr. Rana's capabilities and potential were recognized, leading to his promotion to the role of Senior Executive. Throughout his tenure, Mr. Rana has successfully delivered a total of 6+ interior projects in various locations like Surat, Mumbai, Nagpur, etc. Holding a Bachelor's degree in Civil Engineering from S.N. Patel College of Engineering and Technology (Bardoli). His role likely involves a comprehensive blend of technical, managerial, and leadership skills, all of which contribute to the success of the projects he's involved in.

## MR. RONAK SHAH

**JOB TITLE: SENIOR ASSOCIATE**

**FIELD EXPERIENCE - 03+ YEARS**



Mr. Shah's association with the organization began in 2019, and in a relatively short span of time, he has grown to the role of Senior Executive, making a notable impact along the way. Starting as a Site Engineer, Mr. Shah played a pivotal role in managing and supervising construction activities on-site. After two years of dedicated service as a Site Engineer, Mr. Shah's potential and capabilities were recognized, leading to his promotion to the role of Senior Executive. Throughout his tenure, Mr. Shah has successfully delivered a total of 4 interior projects.

## MR. PINKESH KATARIA

**JOB TITLE: SENIOR ASSOCIATE**

**FIELD EXPERIENCE - 12+ YEARS**



Mr. Kataria's journey at The Magnate Projects exemplifies a consistent progression, extensive experience, and a versatile skill set in the realm of construction and project management. His affiliation with the company, which began in 2017. Commencing as a Site Engineer, Mr. Kataria demonstrated his commitment to overseeing and managing construction activities. After accumulating four years of invaluable experience as a Site Engineer, Mr. Kataria's capabilities were recognized, leading to his elevation to the position of Senior Executive. Throughout his tenure, Mr. Kataria has accomplished the successful delivery of 7 interior projects in various locations like Surat, Delhi, Mahabaleshwar, etc. Holding a Diploma degree in Civil Engineering from Government Polytechnic College (Valsad).

## MR. NIKUNJ CHOTALIYA

**JOB TITLE: SENIOR ASSOCIATE**

**FIELD EXPERIENCE - 04+ YEARS**



Mr. Chotaliya's journey at The Magnate Projects is characterized by his career progression, practical experience, and contributions to the company's interior projects. His association with the company, which began in 2017. Starting as a Site Engineer, Mr. Chotaliya played a vital role in overseeing and managing construction activities on-site. Following two years of dedicated service as a Site Engineer, Mr. Chotaliya's capabilities and potential were recognized, leading to his promotion to the role of Senior Executive. Holding a Bachelor's degree in Civil Engineering from Mahavir Swami College of Engineering and Technology (Surat). Mr. Chotaliya likely brings a combination of technical proficiency and managerial skills to his role as a Senior Executive, bolstering the overall success of the projects he's involved in.

## MR. AKSHAY CHAVDA

**JOB TITLE: SENIOR EXECUTIVE**

**FIELD EXPERIENCE - 03+ YEARS**

Mr. Chavda has been a Senior Executive at The Magnate Projects. Prior to his current position, he served as a Site Engineer. Mr. Chavda has successfully delivered 2 interior projects.



## MR. BHAVESH BHAGAT

**JOB TITLE: SENIOR ASSOCIATE**

**FIELD EXPERIENCE - 10+ YEARS**

Mr. Bhagat's journey at The Magnate Projects exemplifies his career advancement, hands-on experience, and his pivotal role in the successful execution of interior projects. Joining the company in 2015 as a Site Engineer and progressing to the position of Senior Executive in 2019 After accumulating four years of valuable experience as a Site Engineer, Mr. Bhagat's capabilities were acknowledged, leading to his promotion to the role of Senior Associate. Throughout his tenure, Mr. Bhagat has successfully delivered a total of 3 interior projects in various locations like Surat, Goa, Aamby Valley, Mumbai, etc. Holding a Diploma degree in Civil Engineering from Dr S. & S.S Gandhi College.



## MR. DINGAT AKHANI

**JOB TITLE: PROJECT COORDINATOR**

**FIELD EXPERIENCE - 04+ YEARS**

Mr. Akhani has been a Project Coordinator at The Magnate Projects since he joined the team in 2018. His responsibilities included scheduling, coordination of all on-site and off-site activities between all the stakeholders and vendor management for construction as well as interior projects. His responsibilities also included assisting the valuation of Real Estate. He has successfully coordinated a Residential (Civil) project of Roongta Developers, Surat and 3 interior projects in Surat. He holds a Master's degree in Construction Engineering and Management from Birla Vishvakarma Mahavidhyalaya (Vidyanagar). He excels in the planning and scheduling of site activities.



## MR. JAIVIK BABRIA

**JOB TITLE: PROJECT COORDINATOR**

**FIELD EXPERIENCE - 04+ YEARS**

Mr. Babaria has been a Project Coordinator at The Magnate Projects. His responsibilities included scheduling, coordination of all on-site and off-site activities between all the stakeholders and vendor management for construction as well as interior projects. He has successfully coordinated the activities of 7 projects in Surat, Baroda, Bareilly and Mohali. He holds a Master's degree in Construction Engineering and Management from Birla Vishvakarma Mahavidhyalaya (Vidyanagar). He excels in identifying risks and problem solving.





## MR. ANKIT MAVANI

**JOB TITLE: SENIOR EXECUTIVE**  
**FIELD EXPERIENCE - 12+ YEARS**

Mr. Mavani's journey at The Magnate Projects reflects a trajectory of growth, dedication, and contributions to the company's endeavors in the field of construction and project management. Joining the company in 2021 as a Site Engineer and advancing to the role of Associate in 2022. Starting as a Site Engineer, Mr. Mavani assumed the pivotal role of overseeing and managing construction activities on-site. After dedicating two years as a Site Engineer, Mr. Mavani's capabilities and potential were acknowledged, leading to his promotion to the role of Associate. Mr. Mavani's relatively short tenure with the company has likely provided him with opportunities to contribute to a range of projects and gain exposure to various aspects of management.



# SERVICES

---



Project scheduling



Coordinating between Consultants, Vendors and Client



site Survey



Quality Analysis



Checking of Project Drawings



Checking of Bills



Quantity Analysis



Risk Analysis



Vendor Research

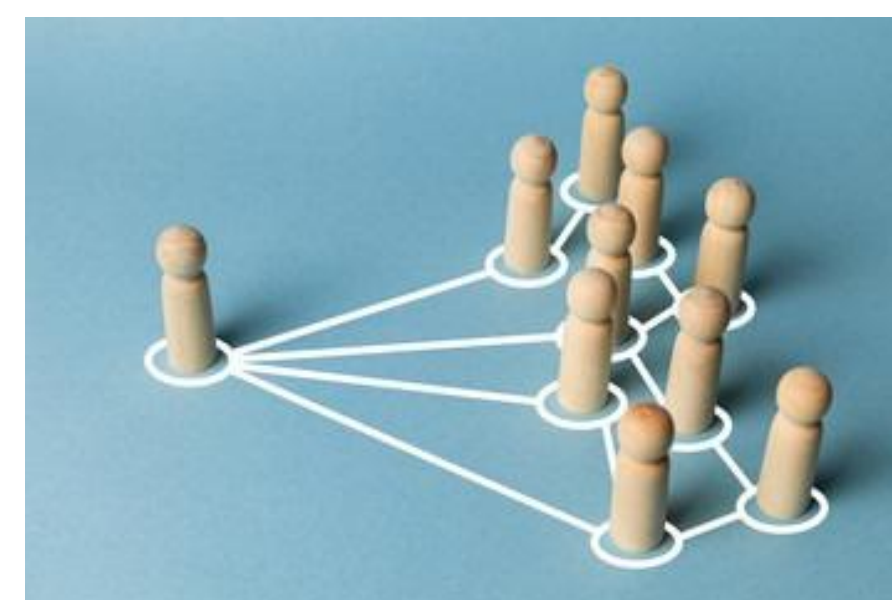


Risk Mitigation Plan

# ...CONTINUED



Risk Register



Coordination for Material & Quantity Required



On-site supervision of site safety

# SWOT ANALYSIS

## STRENGTHS

- Material Rate Analysis
- Delivering quality work within time & budget
- Maintaining Relationships with all stakeholders.



## WEAKNESS

- Lack of technological advancement limits the services provided
- Ineffective marketing strategy limits the addressable markets
- Reliability on the market needs and processes



## OPPORTUNITIES

- Growth opportunity in with Infrastructure boom in India



## THREATS

- Intense Price Competition
- Operating in complex & challenging industry



# SOME PRESTIGIOUS PROJECTS



## **BALDOTA HOUSE, AAMBY VALLEY**

**Location:-** Aamby Valley, Lonavala

**Project Area :-** 40,000 Sq.ft.

**Project Category:-** Bungalow Project

It features spacious bungalows surrounded by a large landscape area, providing residents with a serene and natural environment.



## **ENN ENN ONE, SURAT**

**Location:-** Vesu, Surat

**Project Area :-** 90,000 Sq.ft.

**Project Category:-** Office Building Project

Kicked off the high-end interior.



## **BIRLA PARK, KOLKATA**

**Location:-** Birla Park, 17, Gurusday Road, Ballygunge, Kolkata, West Bengal  
**Project Area :-** 7,500 Sq.ft.

**Project Category:-** Bungalow Project

Recently kicked off the high-end interior project for one of the renowned business groups of India - Birla Group.



## **KIRAN GEMS OFFICE IN SURAT DIAMOND BOURSE**

**Location:-** Khajod, Surat

**Project Area:-** 1,00,000 Sqft

**Project Category:-** Office Building Project

Our prestigious project of the renowned diamond group at the 12th, 14th, 15th, and 16th at Surat Diamond Bourse.

# SOME PRESTIGIOUS COMPLETED PROJECTS



## ECO HOMES

**Location :- Bhrahman Faliyu, Palsana, Gujarat**

**Project Category :- ECO HOMES**

An Eco-house (or Eco-home) is an environmentally low-impact home designed and built using materials and technology that reduces its carbon footprint and lowers its energy needs.



## KSB OLYMPIA

**Location :- Block No.171, Kailash Chokdi, Althan, Surat.**

**Project Area :- 3,15,000 Sqft**

**Project Category :- Commercial Project**

As A team Of Civil Engineers & Managers, We Are Well Aware Of On-site Obstructions. In This Project, We Have Tackled Situations Like Water Leakages From Adjacent Area & Soil Collapses. Moreover, Completing The Project Up to Plinth Level Before The Monsoon And Meeting With Clients Budget Especially Regarding Escalators And Elevators With Optimum Quality.



## SPICE VILLA

**Location :- Spice Villa, Piplod, Surat.**

**Project Area : 22,454.74 Sq.ft.**

**Project Category :- Hospitality Project**

Creating A Stress-Free Ambience, Comforting And Visually Appealing Environment Within The Budget Is Itself A Challenge. But Working With Temporary Structures In Rains, Whilst Providing Thermal Insulation Is Something The Magnate Is Proud Of Accomplishing.



## Bhuriba Yatrik Bhavan

**Location:- Near Taleti, Palitana, Gujarat**

**Project Area:- 48,029 Sqft**

**Project Category:- Institutional Project**

Building a Dharmashala Of This Scale In a Remote Area Like Palitana Was Itself Very Challenging With Limited Quality Resources And No Skilled Labour. The Project Had Been Running For 4.5 Years Before Our Appointment. We, However, Completed The Project In 9 Months!!



## SHREE SAIRAM CHARITABLE TRUST HOSPITAL

**Location:-** Bardoli.

**Project Area:-** 2,00,000 Sqft

**Project Category:-** Hospitality Project

108-bedded super speciality hospital project at Bardoli city.



## RESIDENCE IN 360 OBEROI

**Location:-** Worli, Mumbai

**Project Area:-** 5,450 Sqft

**Project Category:-** Residential Project

High-end interior work of the residential project on the 43rd floor in Mumbai city is on the verge of completion .





## **HOMELAND CITY**

**Location:- Piplod, Surat.**

**Project Area :- 8,50,000 Sqft**

**Project Category:- Commercial Project**

Largest commercial project in Surat city with unique amenities for a luxurious business class.



## **BROACHA HOUSE**

**Location:- Broacha House, Opp. Garden hotel, Electric House, Colaba, Mumbai.**

**Project Area:- 3,900 Sqft**

**Project Category:- Residential Project**

Recently completed the high-end interior project with the renowned architect Ar. Rajiv Saini sir.



## **SHRI NATHUBHAI & SHRIMATI PARVATIBEN NATHUBHAI DESAI VOCATIONAL TRAINING CENTER**

**Location:-** Vaghaldhara, Gujarat

**Project Area:-** 42,647 Sqft

**Project Category:-** Institutional Project

As This Was An Educational Building, Staying Within The Allotted Budget Along With Providing A Comfortable Environment To Students, While Working With Exposed Brick Work, Rubble Masonry And RCC Work Were The Major Challenge. We Have Effectively Managed To Strike A Balance Between The Issues In The Given Time.



## **NEO PLUS CHILDREN HOSPITAL**

**Location:-** Shivalik Western, LP Savani Road, Adajan, Surat, Gujarat, Surat.

**Project Area :-** 8,611 Sq.ft.

**Project Category:-** Healthcare Sector Project

As It Was Our First Health care Sector Project, We Were Determined To Deliver To Best At Our Capabilities. We Managed To Finish The Entire Project In Merely 6 Months Keeping Up The Best Quality Standards.



## **KUMBHAT ASSOCIATES**

**Location:- Near Rajoo India Showroom, Beside Rahul Raj Mall, Surat.**

**Project Area : 19,500 Sq.ft.**

**Project Category :- Office Building Project**

We Were Introduced In The Project After 5 Years of Its Initiation. All The Team Members Mutually Applied Their Best Technical Knowledge And Worked On Its Elevation Including The Tedious Work Of Dry Cladding And GRC Work Within 2 Months.

## **TIMES LUXURIA**

**Location:- Vesu, Surat.**

**Project Area :- 4,50,700 Sqft**

**Project Category:- Residential Project**

Due To Change In Plans Of The Already Executed Footings And Adding New Structural Members In The Intermediate Stage, The Project Proved To Be Very Challenging. Execution Of The Same In High Water Table Regions Is Even More Difficult. However, With Prominent Technical Effort It Was Done By All The Team Members.





## GREEN VALLEY

**Location :- Canal road, Next to Capital Green, Vesu, Bharthana, Surat.**

**Project Area :- 8,00,000 Sqft**

**Project Category:- Residential Project**

We Were Introduced In Project After Technical Issues Faced Initially. The Magnate Team Along with All The Other Stakeholders Applied Their Best Technical Knowledge And Experience In The Field To Rescue The Project And Bring It Back On Schedule, Which Now Runs Smoothly.



## ROONGTA SIGNATURE

**Location:- Anand Park, Althan, Surat, Gujarat**

**Project Area :- 2,00,000 Sqft**

**Project Category:- Commercial Project**

The project was started just before the monsoon, but despite various challenges like soil collapse, water leakages, etc. faced on-site, the project was completed as per planned schedule under the guidance of PMC.



## IMPERIAL TOWER

**Location:-** Tardeo, Mumbai

**Project Area:-** 5,450 Sqft

**Project Category:-** Residential Project

Recently completed interior work of the residential project on the 53rd floor in Mumbai city is on the verge of completion .



## RESIDENCE IN 360 OBEROI

**Location:-** Worli, Mumbai

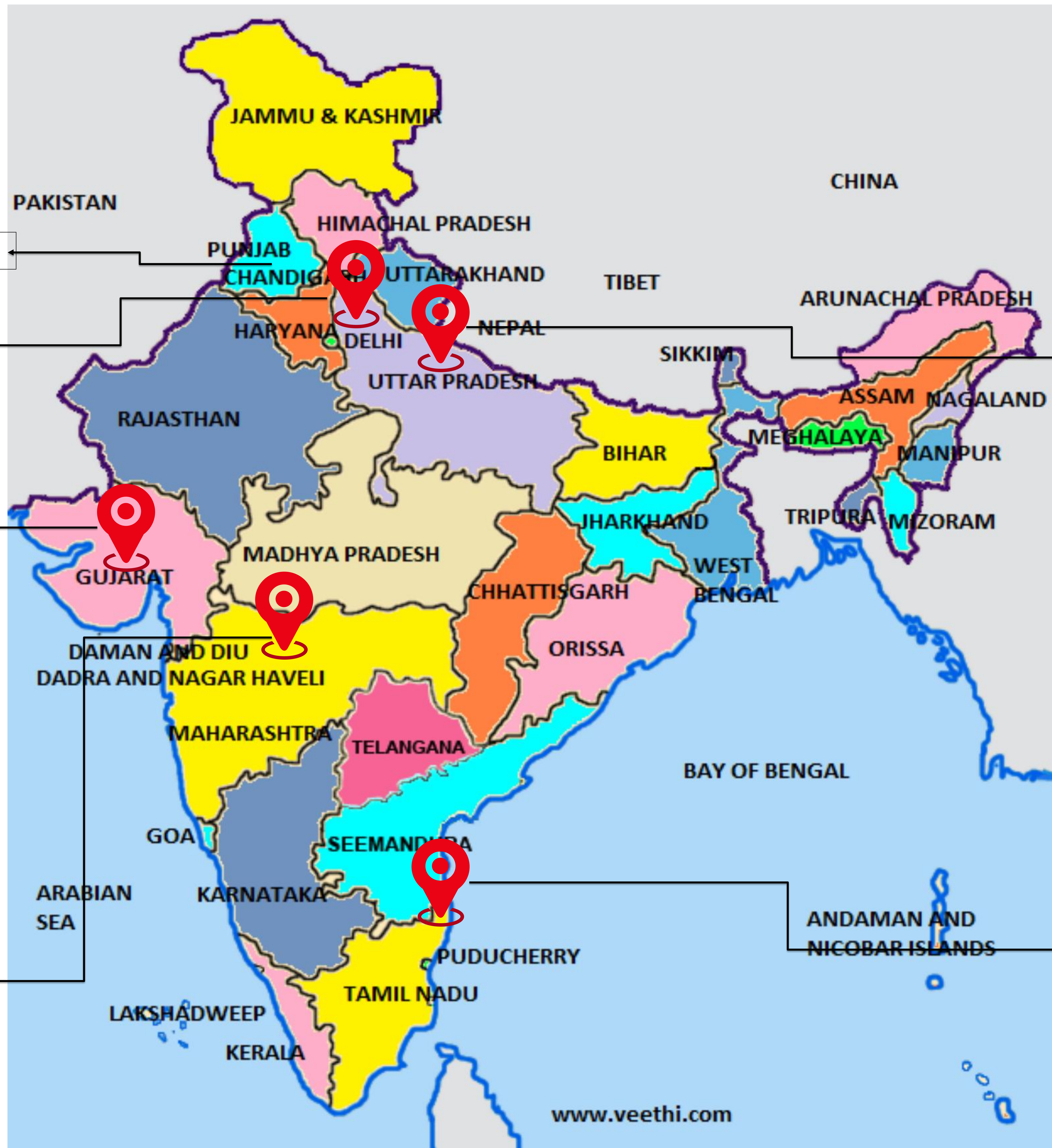
**Project Area:-** 5,450 Sqft

**Project Category:-** Residential Project

Recently completed interior work of the residential project on the 41st floor in Mumbai city is on the verge of completion .

# COMPLETED PROJECTS

SR NO.	PARTICULARS	NO. OF PROJECTS	SQ.FT
1	INDUSTRIAL PROJECTS	7	3,84,000
2	COMMERCIAL PROJECTS	23	11,80,000
3	HOSPITALITY PROJECTS	6	3,46,000
4	OFFICE BUILDING PROJECTS	20	83,400
5	BUNGALOW PROJECTS	23	1,78,700
6	RESIDENTIAL PROJECTS	66	12,27,740
7	HEALTH CARE PROJECTS	1	20,000
8	RESI - COM PROJECTS	1	3,15,000
9	INSTITUTIONAL PROJECTS	2	1,50,000
1	PUBLIC PROJECTS	1	50,000
0	<b>TOTAL</b>	<b>150</b>	<b>39,34,840</b>



1.MOHALI

1.NEW DELHI -  
CHATTARPUR

1.ALLAHABAD  
2.BAEILLY

1.SURAT  
2.ANKLESHWAR  
3.VADODARA  
4.KIM  
5.NAVSARI  
6.CHIKHLI  
7.VAGALDHARA  
8.PALITANA  
9.BHARUCH  
10.BARDOLI

1.MUMBAI  
2.MAHABALESHWAR  
3.NAVAPUR

1.CHENNAI

# PRESTIGIOUS COMPLETED PROJECTS IN GUJARAT



## COMMERCIAL PROJECTS

- SHOWROOM OF **MR. ANKUR DHARIWAL** AS VENEER POINT, ALTHAN, SURAT.
- SHOWROOM OF **KANCHANA FASHION**, MILLENNIUM MARKET, SURAT.
- SHOWROOM OF **ALVEERA**, MILLENNIUM MARKET, SURAT.
- SHOWROOM OF **M/S. LAXMIPATI** AT MILLENNIUM MARKET, SURAT.
- TEXTILE BUILDING OF **MR. JIGNESH PATEL** AT PANDESARA, SURAT
- **RENAULT SHOWROOM** AT SURAT AND **RENAULT WORKSHOP** AT BHATPORE, SURAT
- **KANAIYA READYMADE AND GARMENTS** OLPAD OF AR.VISHAL KHERADIA
- **FAIRDEAL TEXTILE PARK** AT KOSAMBA FOR **ADDA DESIGN & ASSOCIATES** AT SURAT.
- JEWELLERY SHOWROOM OF **MR. RAMESH GANNA DAGINA JEWELLERY**, PARLE POINT, SURAT
- COMMERCIAL PROJECT OF **MR. ANKUR ROONGTA ROONGTA SIGNATURE**, NEW CITYLIGHT, SURAT (PROJECT SIZE - 2,00,000 SQ.FT) OF **ADDA ARCHITECTS**
- SHOWROOM OF **MR. SUNIL NAHATE SHIV SHAKTI LAMINATES**, NAVJIVAN CIRCLE, SURAT FOR **UTOPIA ARCHITECTS**.
- COMMERCIAL PROJECT OF **MR. MOHIT AGARWAL**, **VACANZA TRADE CENTER**, VESU, SURAT FOR **AAYOJAN ARCHITECTS** (PROJECT SIZE - 1,25,000 SQ. FT)
- COMMERCIAL PROJECT OF **MR. KHIMJI BHARVAD** KSB OLYMPIA, ALTHAN (PROJECT SIZE - 3,15,000 SQ.FT)
- COMMERCIAL PROJECT OF **MR. RAVI AGARWAL** AT MILLENNIUM MARKET, RING ROAD FOR **AR. KETAN PANCHAL** (PROJECT SIZE - 3,15,000 SQ.FT)
- COMMERCIAL PROJECT OF **MR. PUKHRAJ JAIN**, **CINEZZA THEATRE** AT JAHANGIRPURA, SURAT FOR **DESIGN CELL** (PROJECT SIZE - 25,000 SQ.FT)
- COMMERCIAL PROJECT OF **MR. DHANRAJJI**, IDEAL HARDWARE AT VESU, SURAT FOR **AR. BHERU JANGID**
- COMMERCIAL PROJECT OF **AGARASEN BHAWAN**, SURAT FOR **AR. VISHAL KHERADIYA**.
- COMMERCIAL PROJECT OF **MR. MILAN SHAH**, KALAMANDIR JEWELLERS, GHOD DOD ROAD, SURAT FOR **AR. KALPESH ITALIYA**



## INDUSTRIAL PROJECTS

- FACTORY OFFICE OF **MR. NIKHIL AGARWAL** AT PIPODARA, KIM
- DIAMOND FACTORY OF **S. VINOD KUMAR DIAMOND PVT. LTD**, SURAT
- INDUSTRIAL CAMPUS OF **MR. DHARMESH PATEL** AT HOJIWALA INDUSTRIAL AREA, SURAT
- FACTORY OF **MR. HITESH MEHTA**, KATARGAM FOR **AR. AMOL PRADHAN** (PROJECT SIZE - 6,400 SQ.FT).
- INDUSTRIAL CAMPUS OF **MR. SARTHAK KEDIA**, NAVAPUR (PROJECT SIZE - 84,000 SQ. FT)
- INDUSTRIAL CAMPUS OF **MR. SUNIL NAHATE**, VESU, SURAT (PROJECT SIZE - 5000 SQ.FT)
- INDUSTRIAL CAMPUS OF **MR. KIRTIBHAI PATEL**, HOJIWALA FOR **AR. PIYUSH PATEL** (PROJECT SIZE - 50,000 SQ.FT).

## HOSPITALITY PROJECTS

- **MAHAVEER SANSKAR DHAM** AT JAHANGIRPURA, SURAT FOR **MR. NANALALJI** OWNER OF EVERSINE MARBLE GROUP AND **MR. PUKHARAJ** OWNER OF RAJHANS GROUP.
- **SHREEJI VATIKA** (WEDDING HOUSE) OF **MR. HARISH MEHTA AND MR. RAJNI** (OWNER OF SHREEJI GROUP) AT PIPLOD FOR **MR. VATSAL THAKKAR**.
- **SPICE VILLA** RESTAURANT AT PIPLOD, SURAT.
- WEEKEND HOMES OF **CASSA MARINA**, UBHRAT, SURAT FOR **R+H DESIGNS** (PROJECT SIZE - 8,000 SQ.FT)
- COMMUNITY HOUSE OF **AGARWAL PRAGATI TRUST**, DUMAS ROAD, SURAT FOR **AR. MANISH CHOKSI** (PROJECT SIZE - 2,00,000 SQ.FT).

## HEALTH CARE SECTOR PROJECTS

- **AMAR HOSPITAL** AT PALANPUR PATIYA FOR **AR. VATSAL THAKKAR**. **NEOPLUS HOSPITAL**, L.P.SAVANI ROAD, SURAT

## OFFICE BUILDING PROJECTS

- OFFICE BUILDING OF **MR. BHARAT TULSIYANI** AT ICHHAPORE G.I.D.C, SURAT.
- OFFICE OF **MR. KIRAN SANGHVI** AT I.B.C, PIPLD, SURAT.
- OFFICE BUILDING OF **M/S. SIDDHI CONSULTANT**, ANKLESHWAR.
- OFFICE BUILDING OF **MR. RAMESH BHAI** (EVERSHINE ITALIAN OWNER) AT NEW CITY LIGHT, SURAT.
- OFFICE BUILDING OF **MR. NIRANJAN AGARWAL** AT JEEVANDEEP, RING ROAD, SURAT.
- OFFICE BUILDING OF **M/S AGLON PVT.LTD** (DIRECTOR MR.VISHNU GOENKA) AT KIM.
- OFFICE OF **MR. KUNJAL SUKHADIYA** AT HELIOS, ADAJAN.
- OFFICE AND RESIDENCE OF **C.A. DENISH CHOKSHI** AT SURAT.
- OFFICE BUILDING OF **MR.KALPESH KANTU BHAI PATEL** AT SURAT.
- OFFICE OF **MR. ANKUR ROONGTA ROONGTA CORPORATE OFFICE**, VESU, SURAT FOR **ADDA ARCHITECTS**
- **KUMBHAT HOUSE** FOR **C.A. NIRAJ KUMBHAT** AT PIPLD,SURAT FOR **AR. DHIREN CHHEDA** (MUMBAI).
- OFFICE BUILDING OF **MR. PRIYANK BHAI** AT **LENORA**, SURAT.
- OFFICE BUILDING OF **MR. KISHORJI**, SURAT DIAMOND BOURSE, SURAT FOR **AR. ABHISHEK BHANSALI** (PROJECT SIZE - 1,350 SQFT)
- OFFICE BUILDING OF **MR.RAJESH TEKRIWAL**, SACHIN FOR **AR. MANISH CHOKSI** (PROJECT SIZE - 12,000 SQ.FT)
- 2 FLOOR OFFICE BUILDING OF **MR. HITESH PATEL**, DHARMANADAN EXPORT, SURAT DIAMOND BOURSE, SURAT OF **AR. DWG & A STUDIO** (PROJECT SIZE - 40,000 SQFT)
- OFFICE BUILDING OF **MR. VINAY AGARWAL**, ICC, SURAT OF **AR. MANISH CHOKSI** (PROJECT SIZE- 10,000 SQ.FT)
- OFFICE BUILDING OF **MR. HARISH VISHNANI** AT **SANGINI TEXTILE HUB** FOR **OSRI ARCHITECTS**.
- OFFICE BUILDING OF **MR. PANKAJ KARNAVATAT MONTESSA** FOR **LA CREATIVE INTERIORS**.
- OFFICE BUILDING OF **MR. SWAPN SHAH** AT MILESTONE CITADEL, ADAJAN FOR **AR. NIMISH CHOKSI**
- OFFICE BUILDING OF **MR. JATIN DAWRA**, ANTALYA FURNITURE, SURAT FOR **DESIGN CORE AR. MANISH CHOKSI**. (PROJECT SIZE - 19,000 SQ. FT)

## BUNGALOW PROJECTS

- BUNGALOW OF **MR. JIGNESH PATEL**, CITYLIGHT, SURAT.
- BUNGALOW OF **MR. KANTI PATEL**, AMBHETI, SURAT.
- RENOVATION WORK OF BUNGALOW OF **MR. KALPESH KANTU PATEL** (OWNER OF KG GROUP), CITY LIGHT, SURAT.
- BUNGALOW OF **MR. AMIT DALMIA** AT RAJHANS FELLIX, VESU, SURAT FOR **AR. MANISH CHOKSI**.
- BUNGALOW OF **MR. HARISH** AT KUMBHARIA, SURAT FOR **AR. VISHAL KHERADIA**.
- BUNGALOW OF **MR. RAJENDRA** AT SURAT FOR **AR. SHAILESH**.
- BUNGALOW OF **MR. PRAKASH** AT SURAT.
- BUNGALOW OF **MR. MICKY KAPADIA** AT SURAT FOR **AR. VISHAL KHERADIA**.
- BUNGALOW OF **MR. RAMESH GABANI** AT TRIKAMNAGAR, SURAT FOR **AR. VISHAL KHERADIYA**.
- BUNGALOW OF **MR. JIGAR PATEL** AT DHARMA RAJ, ADAJAN, SURAT FOR **AR. VISHAL KHERADIYA**.
- BUNGALOW OF **MR. SATHISH SONI** AT KIM.
- BUNGALOW OF **MR. ANKUR ARORA** RAJHANS FELIX, VESU, SURAT FOR **AR. AJAY PANCHAL**.
- BUNGALOW OF **MR. RAJU BORANA** RAJHANS FELIX, VESU, SURAT FOR **AR. MANISH CHOKSI**.
- RESIDENCE OF **MR. VASANT THAKKAR**, CAPITAL STATUS, SURAT.
- RESIDENCE OF **MR. CHIRAG MODI** (M/S DHIRAJ SONS PVT.LTD.) AT MAHER PARK, CHANDNI CHOWK, SURAT.
- BUNGALOW OF **MR. DHARMESH PATEL**, SIYADA, CHIKHLI.
- BUNGLOW OF **DR. JAY VANKAWALA**, PARLE POINT, FOR **AR. AJAY PANCHAL** (PROJECT SIZE - 7,200 SQ.FT).
- BUNGALOW OF **MR. SANJAY SHAH** PYRAMID HOUSE, ANKLESHWAR FOR **AR. RAVI KALAPI**.
- BUNGALOW OF **MR. AALOK TAYAL** AT VATSALYA BUNGALOW, VESU, SURAT FOR **AR. VATSAL THAKKAR**.  
(PROJECT SIZE - 6,250 SQ.FT)
- BUNGALOW OF **MR. DASHRATH DESAI** CITYLIGHT, SURAT FOR **KEYSTONE ARCHITECTS (BANGLORE)** (PROJECT SIZE - 12,500 SQ.FT).
- BUNGALOW OF **MR. KAUSHIK PATEL**, ANKLESHWAR FOR **AR. SANJAY SHELDIA** (PROJECT SIZE - 10,000 SQ.FT).

## RESIDENTIAL PROJECTS

- RESIDENCE OF **MR. VASANT THAKKAR** AT L.P.SAVANI ROAD, SURAT.
- RESIDENCE OF **MR. BHASKAR BHAI** AT VASTU LUXURIA, SURAT.
- RESIDENCE OF **MR. TUSHAR BHAI** (OWNER OF ALTA VISTA) AT FLORENCE, VESU, SURAT.
- SAMPLE FLAT OF **LEGEND VESU**, SURAT FOR **AR. RASESH LAKHANI**.
- RESIDENCE OF **MR. RAKESH KHENI AND MR. HIREN KHENI**, RIVERWIND, SURAT.
- RESIDENCE OF **MR. RAJESH TEKRIWAL** (OWNER OF JAY AMBE TEXTILES) AT AASHIRVAD PALACE, SURAT.
- RESIDENCE OF **C.A. PANKAJ KARNWAT** AT SPRING VALLEY, NEW CITY LIGHT, SURAT.
- RESIDENCE OF **MR. NIRANJAN DESAI**, AADARSH SOC.,SURAT FOR **AR.SANJAY JOSHI**
- RESIDENCE OF **MR. SATYEN SOMANI**, SPRING VALLEY, SURAT.
- RESIDENTIAL PROJECTS OF **MR. ARUN JAIN**, CORONA HEIGHTS, PAL FOR **AR. TEJAS MISTRY**
- RESIDENCE OF **MR. DHARAM BHAI** ( DMD DEVELOPER), SPRING VALLEY, SURAT.
- RESIDENCE OF **MR. JAYANTI TATER** AT CAPITAL GREEN, CANAL ROAD, VESU, SURAT.
- RESIDENCE OF **MR. MAHENDRA TATER** AT CAPITAL GREEN, CANAL ROAD, VESU, SURAT
- RESIDENCE OF **MR. GAJENDRA TATER** AT CAPITAL GREEN, CANAL ROAD, VESU, SURAT.
- RESIDENCE OF **MR. DINESH TATER** AT CAPITAL GREEN, CANAL ROAD, VESU, SURAT.
- RESIDENCE OF **MR. RAVI SARAF** AT CAPITAL GREEN,CANAL ROAD, VESU, SURAT.
- RESIDENCE OF **MR. RAJIV JINDAL** AT SPRING VALLEY, SURAT
- RESIDENCE OF **MR. ILIYASH** (DIRECTOR OF OVERSEAS DEVELOPERS) AT SHANTAM, SURAT.
- RESIDENCE OF **C.A. HARIRAM PRASHAD TOSHNIWAL** AT SPRING VALLEY, NEW CITYLIGHT, SURAT.
- RESIDENCE OF **MR. KAMAL BHUTRA** AT COSMIC. NEW CITYLIGHT, SURAT FOR **AR. MANISH CHOKSI**
- RESIDENTIAL PROJECT OF **MR. NITIN ADANI**, HAPPY EXCELLENCIA, VESU, SURAT FOR **AR. MANISH CHOKSI**.



- RESIDENCE PROJECT OF **MR. ASHISH AGARWAL**, RAJHANS GRANDEZZA, VESU, SURAT FOR **AR. MANISH CHOKSI**.  
(PROJECT SIZE - 2,000 SQ.FT)
- RESIDENCE OF **MR. PRAMOD PODDAR** (OWNER OF RACHIT TEXTILES) AT SPRING VALLEY, SURAT.
- RESIDENCE OF **MR. ANAND KHAITAN RATNA MILAN**, SURAT FOR **AR. BHERU JANGID**.
- RESIDENCE OF **MR. VIKAS GOEL** AT BLOSSOM, VESU, SURAT FOR **AR. MAISH CHOKSI**.
- RESIDENCE OF **MR. NARESH BABARIA** AT KALISHA HEIGHT, MOTA VARACHHA, SURAT.
- RESIDENCE OF **DR. NITIN PATEL** AT FOUR-SEASON, SURAT.
- RESIDENCE OF **MR. SANJAY TODI** HAPPY EXCELLENCIA, VESU, SURAT FOR **AR. MANISH CHOKSI**.
- RESIDENCE PROJECT OF **MR. AJAY AGARWAL** HAPPY EXCELLENCIA, VESU, SURAT FOR **AR. RAVI JAIN (MUMBAI)**.  
(PROJECT SIZE - 6,400 SQ.FT)
- RESIDENCE PROJECTS OF **MR. MANISH TEJANI**, CELLESTIAL DREAMS, NEW CITYLIGHT FOR **AR. MANISH CHOKSI**.  
(PROJECT SIZE - 5,940 SQ.FT)
- RESIDENCE PROJECT OF **MR. VIJAY JI MEERA PARK**, ALTHAN, SURAT FOR **AR. NILESH BASIYA**. (PROJECT SIZE - 1,089 SQ.FT)
- RESIDENCE OF **MR. JAY PRAKASH** CELLESTIAL DREAMS, NEW CITYLIGHT, SURAT FOR **AR. SIMIT RAVASIYA**.
- RESIDENCE OF **MR. SHIV SHANKAR** CELLESTIAL DREAMS, NEW CITYLIGHT, SURAT FOR **AR. SIMIT RAVASIYA**.
- RESIDENCE OF **MR. BHADRESH SHAH** CELLESTIAL DREAMS, NEW CITYLIGHT, SURAT FOR **AR. MANISH CHOKSI**.
- RESIDENTIAL PROJECTS OF **MR. CHINTAN DEPUTY**, CELLESTIAL DREAMS, NEW CITYLIGHT FOR **AR. VIPUL SUKHADIYA**.
- SAMPLE FLAT AND AMENITIES OF SHAURYA PALACE OF **MR. ANANT PODDAR**, GHOD DOD ROAD, SURAT OF **AR. MANISH CHOKSI**.
- RESIDENTIAL PROJECTS OF **SIDDHI VINAYAK DEVELOPERS ATMOSPHERE**, BHARTHANA, VESU OF **AR. MANISH CHOKSI**.
- RESIDENCE OF **MR. SUBHASH BANSAL AND MR. GHANSHYAM BANSAL** COSMIC, NEW CITYLIGHT, SURAT FOR **AR. ABHISHEK BHANSALI**
- RESIDENTIAL PROJECT OF **MR. SANJAY JAIN**, HAPPY EXCELLENCIA, VESU, SURAT FOR **AR. MANISH CHOKSI**.

- RESIDENCE OF **MR. CHIRAG SHAH** HAPPY EXCELLENCIA, VESU, SURAT FOR **AR. MAYUR MEHTA.**
- RESIDENCE OF **MR. SHYAMJI RATHI** SPRING VALLEY, VESU, SURAT.
- RESIDENCE PROJECT OF **MR. RAMESH GANNA, HAPPY EXCELLENCIA,** VESU, SURAT FOR **STUDIO ENVIRONMENTAL STUDIO (MUMBAI).** (PROJECT SIZE - 6,700 SQ.FT)
- SAMPLE FLAT OF GREEN VALLEY OF **MR. ANKUR ROONGTA,** GREEN VALLEY BUILDING CAMPUS, BHARTHANA, SURAT FOR **KNS ARCHITECTS (MUMBAI).**
- INTERIOR PROJECT OF **J.B.BROTHERS** AT SURAT FOR **D'CENT DZINERS ARCHITECTS,** BOMBAY.
- RESIDENTIAL PROJECTS OF **MR. ANKUR ROONGTA** GREEN VALLEY BUILDING CAMPUS, BHARTHANA, SURAT (PROJECT SIZE - 10,00,000 SQ.FT) FOR **AR. SANJAY JOSHI & KNS ARCHITECTS (MUMBAI).**
- RESIDENCE PROJECT OF **MR. BHARAT SHAH** AT **RAJHANS ELITA,** PAL, SURAT. (PROJECT SIZE - 1,608 SQ.FT)
- RESIDENCE PROJECT OF **MR. YOGESH DESHMUKH,** SOMNATH ENCLAVE, PARLE POINT, SURAT (PROJECT SIZE - 1,763 SQ.FT)
- RESIDENCE PROJECT OF **MR. HITESH MEHTA** HAPPY EXCELLENCIA, VESU, SURAT FOR **AR. MANISH CHOKSI.** (PROJECT SIZE - 6,200 SQ.FT)
- RESIDENCE PROJECT OF **MR. LAHERCHAND MEHTA** HAPPY EXCELLENCIA, VESU, SURAT FOR **AR. MANISH CHOKSI.** (PROJECT SIZE - 6,200 SQ.FT)
- 3 RESIDENCE PROJECT OF **MR. GULABJI,** CELLESTIAL DREAMS, NEW CITYLIGHT FOR **AR. MANISH CHOKSI.** (PROJECT SIZE - 4,700 SQ.FT)
- RESIDENCE PROJECT OF **MR. RAJUBHAI SHAH,** HAPPY EXCELENCIA, VESU, SURAT FOR **UNIT 93 (MUMBAI),** (PROJECT SIZE - 6,700 SQ.FT)
- RESIDENTIAL PROJECT OF **MR. SURESH AGARWAL,** GREEN VALLEY, VESU, SURAT FOR **KNS ARCHITECTS (MUMBAI),** (PROJECT SIZE - 2700 SQ.FT)
- RESIDENCE PROJECT OF **MR. ASHOKJI DAGA,** RAJHANS ROYALTON, NEW CITYLIGHT, SURAT FOR **B.DESIGNS24 STUDIO.** (PROJECT SIZE - 3,330 SQ.FT)
- RESIDENCE PROJECT OF **MR. MILAN SHAH,** HAPPY EXCELLENCIA, VESU, SURAT FOR **AR. KALPESH ITALIYA.** (PROJECT SIZE - 6,200 SQ. FT)



**THE MAGNATE**

working on the edge

- RESIDENCE OF **MR. ANKUR DHARIWAL AT PUNYA BHUMI**, VIP ROAD, SURAT. (PROJECT SIZE - 6000 SQ.FT.)
- RESIDENCE PROJECT OF **MR. RAKESH SOMANI**, HAPPY EXCELLENCIA, VESU, SURAT FOR **AR. AMIT DODIYAWALA**. (PROJECT SIZE - 6,200 SQ.FT)
- RESIDENCE PROJECT OF **MR. JATANJI DAGA**, RAJHANS ROYALTON, NEW CITYLIGHT, SURAT FOR **REFLECT DESIGN STUDIO**. (PROJECT SIZE - 3,300 SQ.FT)
- RESIDENCE PROJECT OF **DR.TIMIR SHAH**, DMD PACIFIC, VESU, SURAT FOR **AR. NILESH BASIYA**. (PROJECT SIZE - 2,252 SQ.FT)
- RESIDENCE PROJECT OF **MR. MUKESH GUPTA**, ELYSIUM AVENUE, PIPLD, SURAT FOR **AR. TEJAS MISTRY** (PROJECT SIZE - 5600 SQ.FT)
- RESIDENCE PROJECT OF **MR. NIRAV PARIKH**, SURYA HERITAGE, VESU, SURAT FOR **AR. TEJAS MISTRY** (PROJECT SIZE - 4000 SQ.FT)
- RESIDENCE PROJECT OF **MR. TOYESH DOTIA**, BELLA DE MORA, VESU, SURAT FOR **AR. VATSAL THAKKAR**. (PROJECT SIZE - 6,700 SQ.FT)
- RESIDENCE PROJECT OF **MR. AJIT JAIN**, CELLESTIAL DREAMS, NEW CITYLIGHT FOR **AR. TEJAS MISTRY**. (PROJECT SIZE - 5,940 SQ.FT)
- RESIDENCE PROJECT OF **MR. DEEPAK CHACHAN**, GREEN VALLEY, VESU, SURAT FOR **AR. DIVYANG MEWADA** (PROJECT SIZE - 2,700 SQ.FT) RESIDENCE PROJECT OF **MR. MILAN SHAH**, HAPPY EXCELLENCIA, VESU, SURAT FOR **AR. KALPESH ITALIYA**. (PROJECT SIZE - 6,200 SQ. FT)

## PUBLIC PROJECTS

- **ASHWANI KUMAR CREMATORIUM FOR NARAYAN TRUST, SURAT.**

## HEALTH CARE SECTOR PROJECTS

- **SHREE SAI RAM CHARITABLE FOUNDATION & TRUST HOSPITAL, BARDOLI FOR ADDA ARCHITECTS.** (PROJECT SIZE - 1,26,000 SQ.FT)

## INSTITUTIONAL PROJECTS

- I.T.I. CAMPUS OF VAGALDHARA SARVAJANIK KELVANI MANDAL, VAGALDHARA

## RESI-COM PROJECTS

- INTERIOR WORK EXECUTION OF **SHREE BALAJI AGORA CITY CENTRE** OF **MR. ASHISH SHAH**, BARODA FOR **AR. MANISH CHOKSI** (PROJECT SIZE - 3,15,000 SQ.FT)

## FARM HOUSE PROJECTS

- FARM HOUSE OF **MR. HITESH PATEL**, KUREL FARM, NAVSARI FOR **AR. DWG ARCHITECTS**. (PROJECT SIZE - 15,400 SQ.FT)

# PRESTIGIOUS COMPLETED PROJECTS PAN INDIA

## COMMERCIAL PROJECTS

- SHOWROOM OF **JINAAM** AT SANTA CRUZ AND LOWER PAREL, BOMBAY
- SHOWROOM OF **SHRI RADHE** AT ALLAHABAD FOR **MR. ANKUR BHAI**.
- SHOWROOM OF **LATT LIV**, BAREILLY FOR **MR. HITESHBHAI**
- SHOWROOM OF **LATT LIV**, CHENNAI FOR **MR. HITESHBHAI**
- SHOWROOM OF **LATT LIV**, MOHALI FOR **MR. HITESHBHAI**

## FARM HOUSE PROJECTS

- FARM HOUSE PROJECT OF **MR. MADHAVJI BAGHARIA**, DELHI FOR **AR. VIKRAM BHATT** (PROJECT SIZE - 30,000 SQ.FT)
- FARM HOUSE PROJECT OF **MRS. POOJA SINGHAL**, GOA FOR **AR. RAJIV SAINI** (PROJECT SIZE - 3500 SQ.FT.)



## RESIDENTIAL PROJECTS

- RESIDENCE PROJECT OF **MR. SHAILESH LUKHI**, OBEROI 360, WORLI, MUMBAI FOR **AR. RAJIV SAINI (MUMBAI)** (PROJECT SIZE - 5,450 SQ.FT)
- RESIDENCE PROJECT OF **MR. VIMAL KHANDWALA**, TARDEO TOWER, MUMBAI FOR **AR. RAJIV SAINI (MUMBAI)** (PROJECT SIZE - 8300 SQ.FT)

## HOSPITALITY PROJECT

- HOSPITALITY PROJECT OF **MR. ROHAN SHEWAKRAMANI**, MAHABALESHWAR FOR **AR. MAIA DESIGN (BANGLORE)**

## INSTITUTIONAL PROJECT

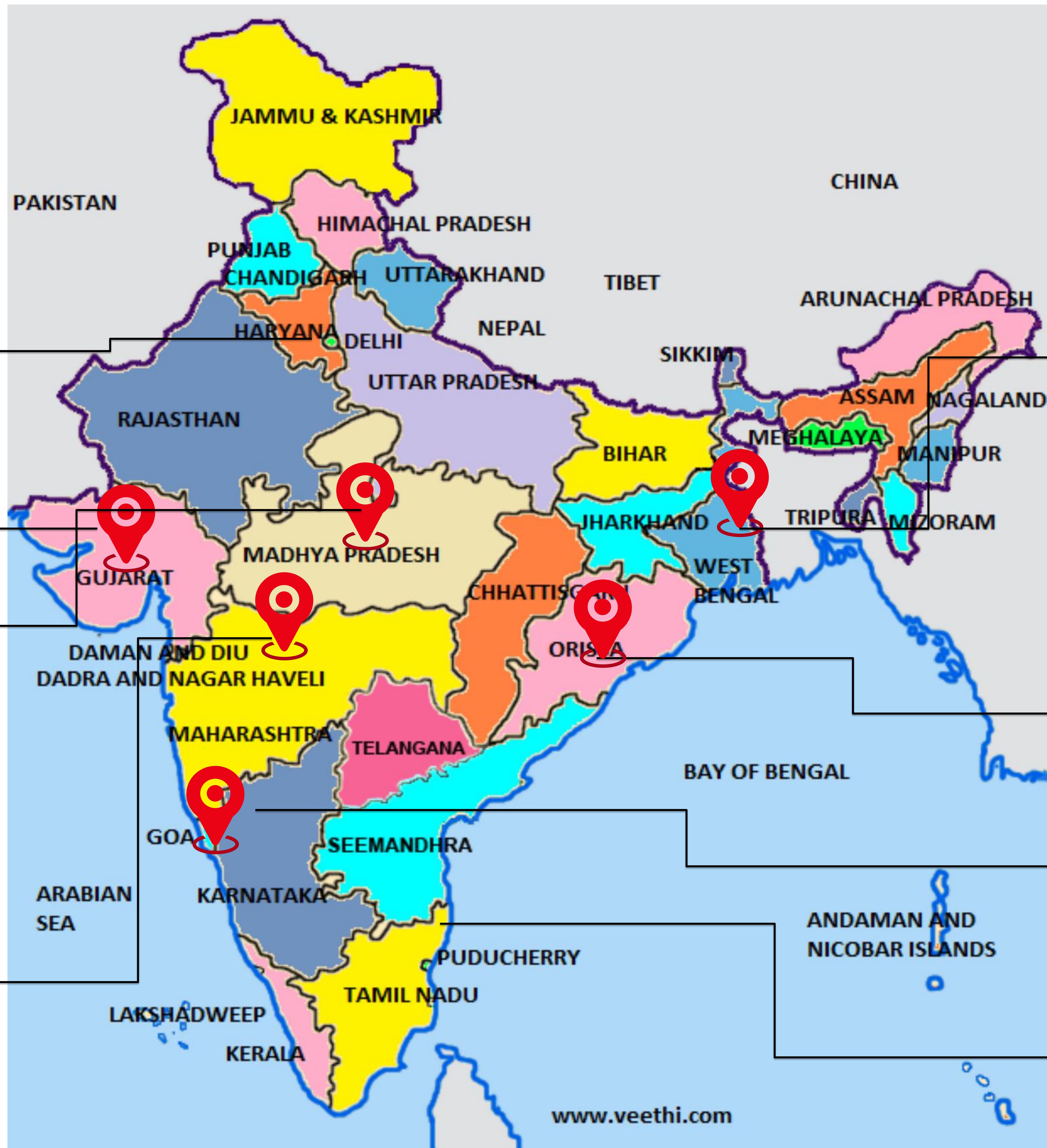
- SCHOOL OF **JBCN INTERNATIONAL SCHOOL**, NAHUR, MUMBAI FOR **JBCN TRUST** (PROJECT SIZE - 1,00,000 SQ.FT)

## OFFICE PROJECT

- OFFICE PROJECT OF **MR. PUNIT SHAH**, ART GALLERY, MUMBAI FOR **AR. RAJIV SAINI (MUMBAI)**

# ONGOING PROJECTS

SR NO.	PARTICULARS	NO. OF PROJECTS	SQ.FT.
<b>1</b>	<b>COMMERCIAL PROJECTS</b>	<b>6</b>	<b>13,35,235</b>
<b>2</b>	<b>FARM HOUSE PROJECTS</b>	<b>2</b>	<b>18,000</b>
<b>3</b>	<b>OFFICE BUILDING PROJECTS</b>	<b>6</b>	<b>2,25,922</b>
<b>4</b>	<b>BUNGALOW PROJECTS</b>	<b>5</b>	<b>52,500</b>
<b>5</b>	<b>INDUSTRIAL PROJECTS</b>	<b>2</b>	<b>1,26,724</b>
<b>6</b>	<b>RESIDENTIAL PROJECTS</b>	<b>17</b>	<b>57,750</b>
<b>7</b>	<b>HOSTEL PROJECTS</b>	<b>1</b>	<b>48,250</b>
	<b>TOTAL</b>	<b>39</b>	<b>18,57,381</b>



1.DELHI

1.KOLKATA

1.SURAT  
2.ANKLESHWAR

1.BHOPAL

1.BHUBANESHWAR

1.GOA – NORTH  
GOA

1.MUMBAI  
2.LONAVALA –  
AAMBY VALLEY  
3.NAGPUR

1.CHENNAI

# PRESTIGIOUS ONGOING PROJECTS IN GUJARAT

## BUNGALOW PROJECTS

- BUNGALOW OF **MR. HITESH PATEL**, ANKLESHWAR FOR **ARYA ARCHITECTS** (PROJECT SIZE - 10,000 SQ.FT).
- BUNGALOW OF **MR. ARUN AGARWAL** AT VESU, SURAT FOR **AR. RAJIV PAREKH** (PROJECT SIZE - 10,000 SQ.FT)
- BUNGALOW OF **MR. NARESH BORANA** AT BHATAR FOR **AR. MANISH CHOKSI**.

## RESIDENTIAL PROJECTS

- RESIDENCE PROJECT OF **MR. SHUBASH AGARWAL**, SHAURYA PALACE, CITYLIGHT, SURAT FOR **AR. MANISH CHOKSI**. (PROJECT SIZE - 3,180 SQ.FT)
- RESIDENCE PROJECT OF **MR. JITUBHAI**, ASHIRWAD PALACE, SURAT FOR **AR. RASESH LAKHANI** (PROJECT SIZE - 7,500 SQ.FT)
- RESIDENCE PROJECT OF **MR. BIKAS JHA**, RAJHANS ROYALTON, VESU, SURAT FOR **AR. MANISH CHOKSI**.
- RESIDENCE PROJECT OF **MR. DEEPESHJI**, SURYA HERITAGE, VESU, SURAT FOR **UNIT 93 (MUMBAI)**,
- RESIDENCE PROJECT OF **MR. DARSHAK SHAH**, ELYSIUM AVENUE, SURAT FOR **AR. NIMESHBHAI, KSA (MUMBAI)**

## COMMERCIAL PROJECTS

- COMMERCIAL PROJECT OF **MR. ANSHUL KHURANA**, HOMELAND CITY AT PIPLOD, SURAT FOR **ADDA ARCHITECTS**. (PROJECT SIZE - 8,50,000 SQ.FT)
- COMMERCIAL PROJECT OF **MR. ANSH KOTHARI**, SHYAM PLAZZA AT ALTHAN, SURAT FOR **AR. JIGAR TALATI** (PROJECT SIZE - 3,00,000 SQ.FT)
- COMMERCIAL PROJECT OF **MR. MILAN SHAH**, KALAMANDIR BUSINESS HUB, ALTHAN ROAD, SURAT FOR **AR. AMIT DODIAWALA**. (PROJECT SIZE - 1,52,735 SQ. FT)
- COMMERCIAL PROJECT OF **MR. DANISH ANSARI**, GLOBAL SILK MILLS, BEGAMPURA, SURAT FOR **AR. BIPINJI**. (PROJECT SIZE - 22,500 SQ. FT)
- COMMERCIAL PROJECT OF **MR. HASHMUKH BHAI PATEL**, MONOSO & VENTURA DISPLAY CENTER, BHATAR, SURAT FOR **AR. TEJAS MISTRY**. (PROJECT SIZE - 10,000 SQ. FT)
- WAREHOUSE PROJECT OF **BHAGYASHREE WAREHOUSING**, PALSANA, SURAT

## OFFICE BUILDING PROJECTS

- OFFICE BUILDING OF **MR. MAVJI LAKHANI**, KIRAN GEMS, SURAT DIAMOND BOURSE, SURAT OF **AR. MANISH CHOKSI** (PROJECT SIZE - 1,00,000 SQFT)
- OFFICE BUILDING OF **MR. AMIT BHIKHADIYA**, DHARAM EXPORT, SURAT DIAMOND BOURSE, SURAT OF **AR. AJAY PANCHAL** (PROJECT SIZE - 1,922 SQFT)
- OFFICE BUILDING OF **MR. NARESHBHAI SHAH**, ENN ENN ONE OFFICE, SURAT FOR **AR. VIKRAM BHATT** (PROJECT SIZE - 90,000 SQ.FT)
- OFFICE BUILDING OF **MR. RAJESH TEKRIWAL**, SACHIN FOR **AR. MANISH CHOKSI** (PROJECT SIZE - 12,000 SQ.FT)

## INDUSTRIAL PROJECT

- INDUSTRIAL PROJECT OF **MR. RAJESH JARIWALA**, SURAT FOR **AR. DHARMESH PATEL** (PROJECT SIZE - 73,340 SQ.FT)
- INDUSTRIAL PROJECT OF **MR. RAKESH JHANGID**, PALSANA, SURAT FOR **AR. SHREE DESIGN & ENGINEERING**. (PROJECT SIZE - 53,384 SQ.FT)

## FARM HOUSE PROJECT

- FARM HOUSE PROJECT FOR **MR. SUBHASHJI AGARWAL**, FARM HOUSE, SURAT FOR **DESIGN CORE, AR. MANISH CHOKSI** )PROJECT SIZE - 4500 SQ. FT)
- FARM HOUSE PROJECT FOR **MR. CHANDRA SHEKHAR YADAV**, FARM HOUSE, SURAT FOR **DESIGN CORE, AR. MANISH CHOKSI** )PROJECT SIZE - 13,500 SQ. FT)

## HOSTEL PROJECT

- HOSTEL PROJECT FOR **SMJV GIRLS HOSTEL**, SURAT FOR **AR. HARESH MAHADEVWALA** (PROJECT SIZE - 48,250 SQ. FT)

# PRESTIGIOUS ONGOING PROJECTS

## PAN INDIA

### RESIDENTIAL PROJECTS

- RESIDENCE PROJECT OF **MR. CHANDRA SHEKHAR NOPANY**, RAHEJA LEGEND, WORLI, MUMBAI FOR **AR. RAJIV SAINI (MUMBAI)** (PROJECT SIZE - 10,000 SQ.FT)
- RESIDENCE PROJECT OF **MR. JITUBHAI, TRUMP TOWER**, MUMBAI FOR **AR. RASESH LAKHANI (MUMBAI)** (PROJECT SIZE - 5600 SQ.FT)
- RESIDENCE PROJECT OF **MR. JEH TIRODKAR**, BROCHA HOUSE, COLABA, MUMBAI FOR **AR. RAJIV SAINI (MUMBAI)** (PROJECT SIZE - 3900 SQ.FT)
- RESIDENCE PROJECT OF **MR. VARUN JIWARJKA**, PALM BEACH, MUMBAI FOR **AR. JANNAT VASI (MUMBAI)** (PROJECT SIZE - 9920 SQ.FT)
- RESIDENCE PROJECT OF **MR. ACHAL BAKERI**, OBEROI 360, WORLI, MUMBAI FOR **AR. RAJIV SAINI (MUMBAI)**. (PROJECT SIZE - 5450 SQ. FT)
- RESIDENCE PROJECT OF **MR. RAVI MARIWALA**, ALHAMBRA, MUMBAI FOR **AR. RAJIV SAINI (MUMBAI)**. (PROJECT SIZE - 9800 SQ. FT)
- RESIDENCE PROJECT OF **MR. VINAYAK KALANI**, FOUR SEASON RESIDENCY, MUMBAI FOR **AR. SAMEERA RATHOD (MUMBAI)** (PROJECT SIZE - 4850 SQ.FT.)
- RESIDENCE PROJECT OF **JHAVER HOUSE OF MR. VEDANT JHAVER**, CHENNAI FOR **AR. RAJIV SAINI (MUMBAI)**. (PROJECT SIZE - 15000 SQ.FT.)
- RESIDENCE PROJECT OF **MR. PRATIK DALMIA**, MUMBAI FOR **AR. RUSHABH PAREKH (MUMBAI)**. (PROJECT SIZE - 7000 SQ.FT.)

- RESIDENCE PROJECT OF **MR. PINKESH MORAKHIYA**, OBEROI 360, WORLI, MUMBAI FOR **AR. GURJIT SINGH MATHAROO (GUJARAT)**. (PROJECT SIZE – 5450 SQ. FT)
- RESIDENCE PROJECT OF **MR. RAJESH KABRA**, OBEROI 360, WORLI, MUMBAI FOR **AR. RAJIV SAINI (MUMBAI)**. (PROJECT SIZE – 10450 SQ. FT)
- RESIDENCE PROJECT OF **AR. JANNAT VASI**, 702, UNION PARK, KHAR WEST, MUMBAI FOR **AR. JANNAT VASI (MUMBAI)**. (PROJECT SIZE – 2000 SQ. FT)

## BUNGALOW PROJECT

- BUNGALOW OF **BIRLA HOUSE, KOLKATA**, FOR **MEHTA DESIGN ASSOCIATES (MUMBAI)** (PROJECT SIZE - 7500 SQ.FT).
- BUNGALOW OF **BALDOTA HOUSE, AAMBY VALLEY**, FOR **AR. RAJIV SAINI (MUMBAI)** (PROJECT SIZE – 10,000 SQ.FT).

## COMMERCIAL PROJECT

- OFFICE PROJECT OF **MR. SAGAR GUPTA** , NOIDA, DELHI FOR **AR.NARESH SHAH & ASSOCIATES (MUMBAI)** (PROJECT SIZE - 25,000 SQ.FT)



# OUR CONSORTIUM WITH PRESTIGIOUS CONSULTANTS



**THE MAGNATE**  
working on the edge

SR NO.	DESCRIPTION	NAME	CITY
<b>ARCHITECT</b>			
1	PARALLEL WALLS	AR. RASESH LAKHANI & AR. SUNIL SHAH	MUMBAI
2	RAJIV SAINI + ASSOCIATES	AR. RAJIV SAINI	MUMBAI
3	reD ARCHITECTS	AR. RAJIV PAREKH	MUMBAI
4	RAVI JAIN	AR. RAVI JAIN	MUMBAI
5	DCA	AR. DHIREN CHHEDA	MUMBAI
6	STUDIO ENVIRONMENTAL	AR. NINA BHATIYA	MUMBAI
7	KNS ARCHITECTS	AR. BHAVESH MEWADA	MUMBAI
8	HORIZON ARCHITECT	AR. HEMAL SHAH	MUMBAI
9	UNIT 93	AR. RISHIT JAIN	MUMBAI
10		AR. SAMEERA RATHOD	MUMBAI
11	MEHTA DESIGN ASSOCIATES	AR. SHAHROOKH MEHTA	MUMBAI
12	TANGENT DESIGN CELL	AR. ROHIT BHATKAR	MUMBAI
13	JANNAT VASI INTERIOR DESIGN	AR. JANNAT VASI	MUMBAI
14	MAIA DESIGN STUDIO	AR. SHRUTI JAIPURIA	BANGLORE
15	DESIGN CORE	AR. MANISH CHOKSI	SURAT
16	ADDA ARCHITECTS	AR. MAYANK PATEL	SURAT
17	DEEP BREATH ARCHITECTS	AR. AJAY PANCHAL	SURAT
18	-	AR. ALPESH MOD	SURAT
19	REFLECT DESIGN STUDIO	AR. AMIT DODIYAWALA	SURAT
20	B. DESIGN 24 STUDIO	AR. BHERU JHANGID	SURAT
21	-	AR. CHIRAG VADGAMA	SURAT
22	-	AR. DHIREN KHENI	SURAT
23	FORMWERKS DESIGN TEAM	AR. DIVYANG MEWADA	SURAT



ARCHITECT			
24	AE TERRAIN	AR. FALGUNI DESAI	SURAT
25	JIGAR INTERIORS	AR. JIGAR TALATI	SURAT
26	-	AR. JITUBHAI	SURAT
27	-	AR. JITUBHAI SABALPARA	SURAT
28	JOBAN DESAI AND ARCHITECTS	AR. JOBAN DESAI	SURAT
29	D. ONLY	AR. KETAN PANCHAL	SURAT
30	ZEN. 63 DESIGN STUDIO	AR. MAYUR MEHTA	SURAT
31	ZEN DESIGN STUDIO	AR. KALPES ITALIYA	SURAT
32	PROLIFIC	AR. NILESH BASIYA	SURAT
33	NIMISH CHOKSI AND ASSOCIATES	AR. NIMISH CHOKSI	SURAT
34	DWG ARCHITECTS	AR. JITENDRA PATEL	SURAT
35	A STUDIO	AR. ANKIT GAJJAR	SURAT
36	GENESIS DESIGN	AR. PIYUSH PATEL	SURAT
37	-	AR. PRATHAM DESAI	SURAT
38	BLACK INK	AR. SANJAY JOSSHI	SURAT
39	UTOPIA ARCHITECTS	AR. VIPUL NAKRANI	SURAT
40	SPACE INTERIORS	AR. VATSAL THAKKAR	SURAT
41	CO. LAB DESIGN STUDIO	AR. VIKRAM BHATT	SURAT
42	VISHAL KHERADIYA & ASSOCIATES	AR. VISHAL KHERADIYA	SURAT
43	KARDRAVEYA	AR. SIMIT RAVSIYA	SURAT
44	STUDIO PALISA	AR. SANJAY SHELADIYA	SURAT
45	THE INTERIOR WORKSHOP	AR. TEJASSH MISTRY	SURAT
46	AAYOJAN ARCHITECTS	AR. HARESH MAHADEVWALA	SURAT
47	DESIGN CELL	AR. KALPESH PATEL	AHMEDABAD
48	ARYA ARCHITECTS	AR. VIJAY ARYA	AHMEDABAD



MEPF			
1	MESPL	MR. SHABBIR MALWAWALA	MUMBAI
2	KROMATICS CONSULTING ENGINEERS	MR. ROHIT KORAGAONKAR	MUMBAI
3	CRAFTTECH ENGINEERING	MR. PAVAN KARALE	MUMBAI
4	INTEGRATED TECHNICAL SERVICES	MR. ROHITJI	MUMBAI
5	AARK CONSULTANT	MR. PRASAD KULKARNI	MUMBAI
6	APOORVA PARIKH	MR. APOORVA PARIKH	AHMEDABAD
7	-	MR. SUHAS PATEL	AHMEDABAD
8	PANKAJ DHARKAR ASSOCIATES (PDA)	MR. PANKAJ DHARKAR	AHMEDABAD
9	NECTOR ENGINEERS	MR. KRISHNA BHAI	AHMEDABAD
10	ATOMEP ENGINEERING	MR. SHAILENDRA VYAS	AHMEDABAD
11	ARTECH ENGINEERING SOLUTIONS	MS. AVNI SIKKA	AHMEDABAD
12	RAVI ENGINEERING SERVICES	MR. MILIND MEHTA	AHMEDABAD
13	EZ ENGINEER PVT LTD	MR. ABDUL KADIR	VADODARA
14	MENTOPOOLS	MR. APPARRO	VADODARA
15	SNEHA FIRE CONSULTANT	MR. GOVIND SUTHAR	VADODARA
16	APEX CONSULTANT	MR. VARUN SHAH	VADODARA
17	J P ELECTRICAL CONSULTANT	MR. DINESH PARMAR	VADODARA
18	MS MEP CONSULTANT	MR. MEET AND SIDDHARTH DESAI	SURAT
19	SHREEJI CONSULTANT	MR. INDRAVADAN VALA	SURAT

# OUR PRESTIGIOUS CIVIL SITE PHOTOS





**THE MAGNATE**  
working on the edge

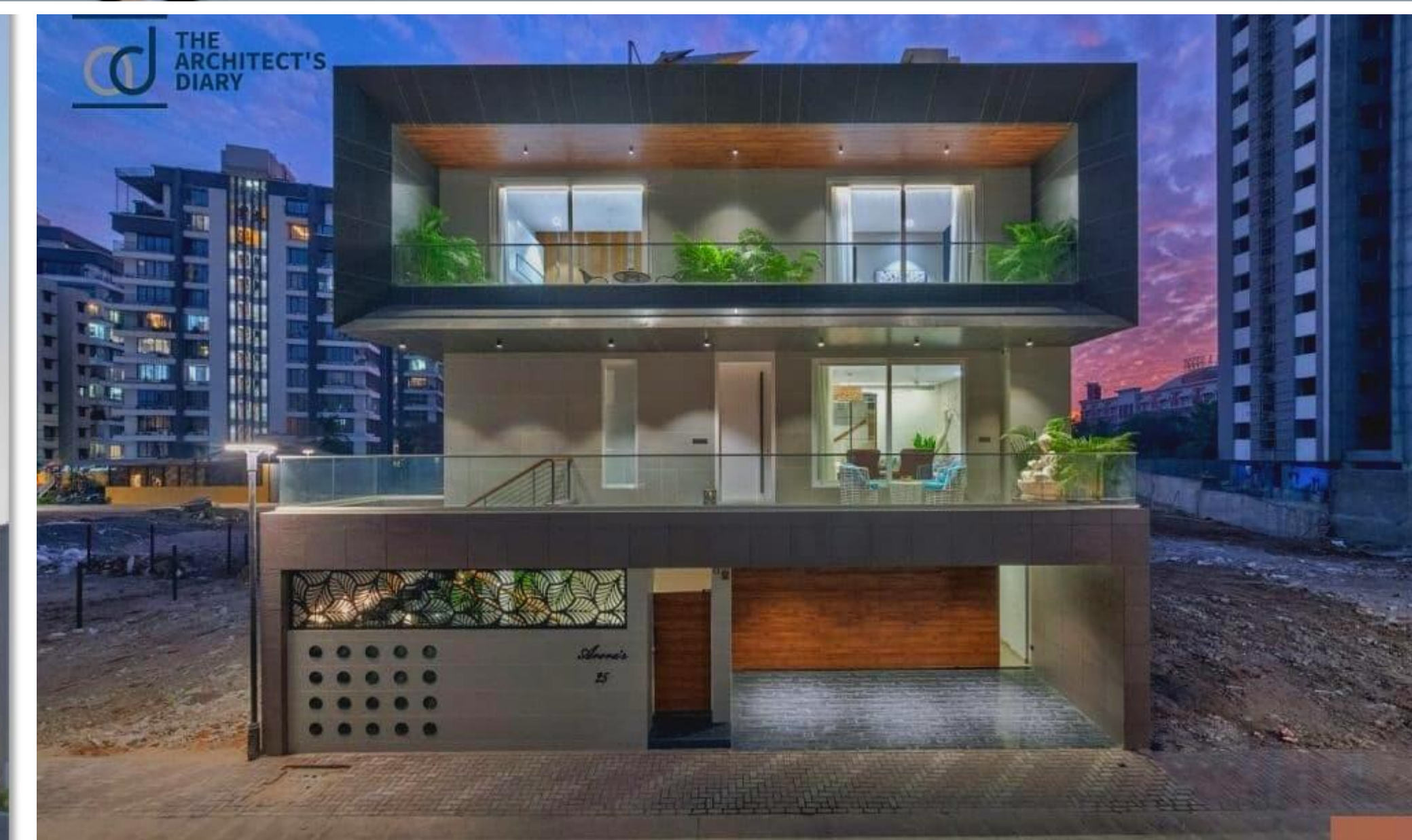
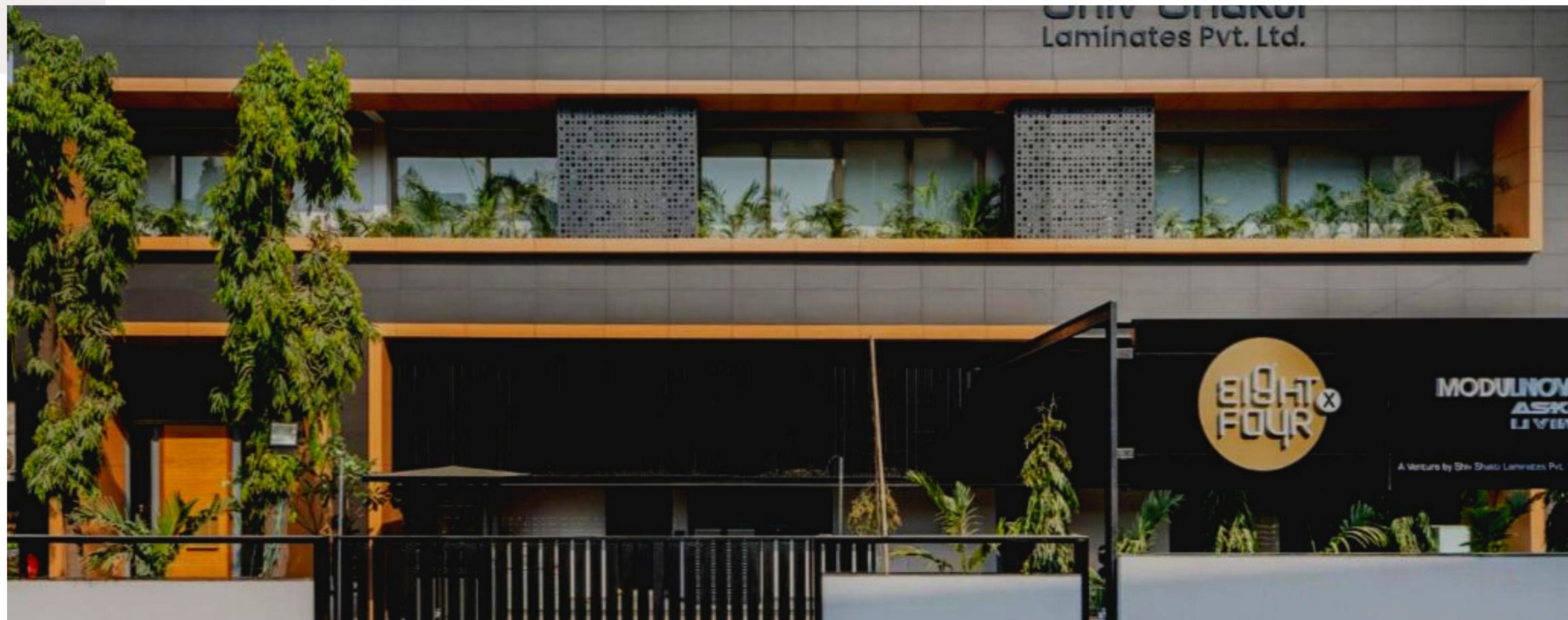




**THE MAGNATE**  
working on the edge



# OUR PRESTIGIOUS INTERIOR SITE PHOTOS



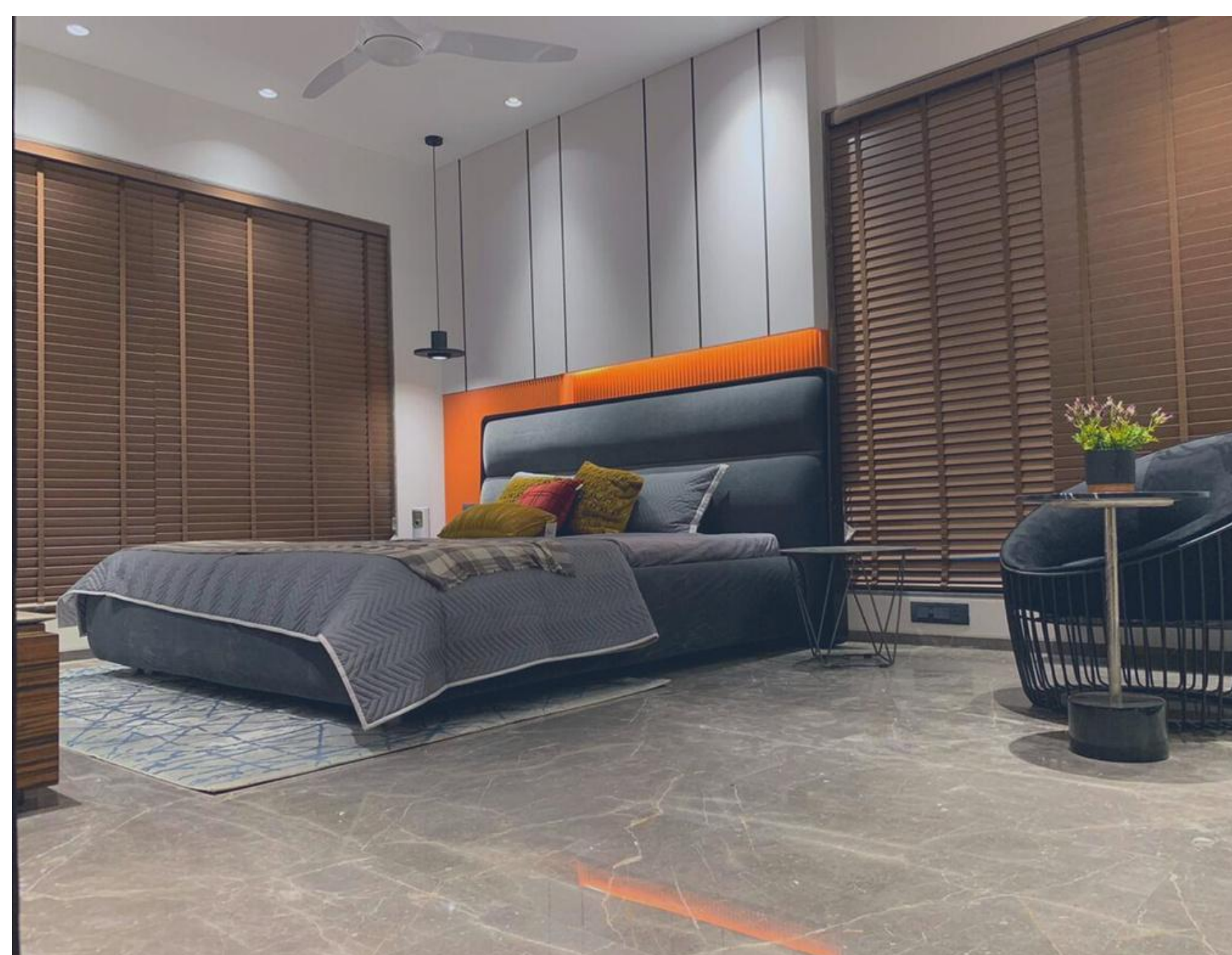
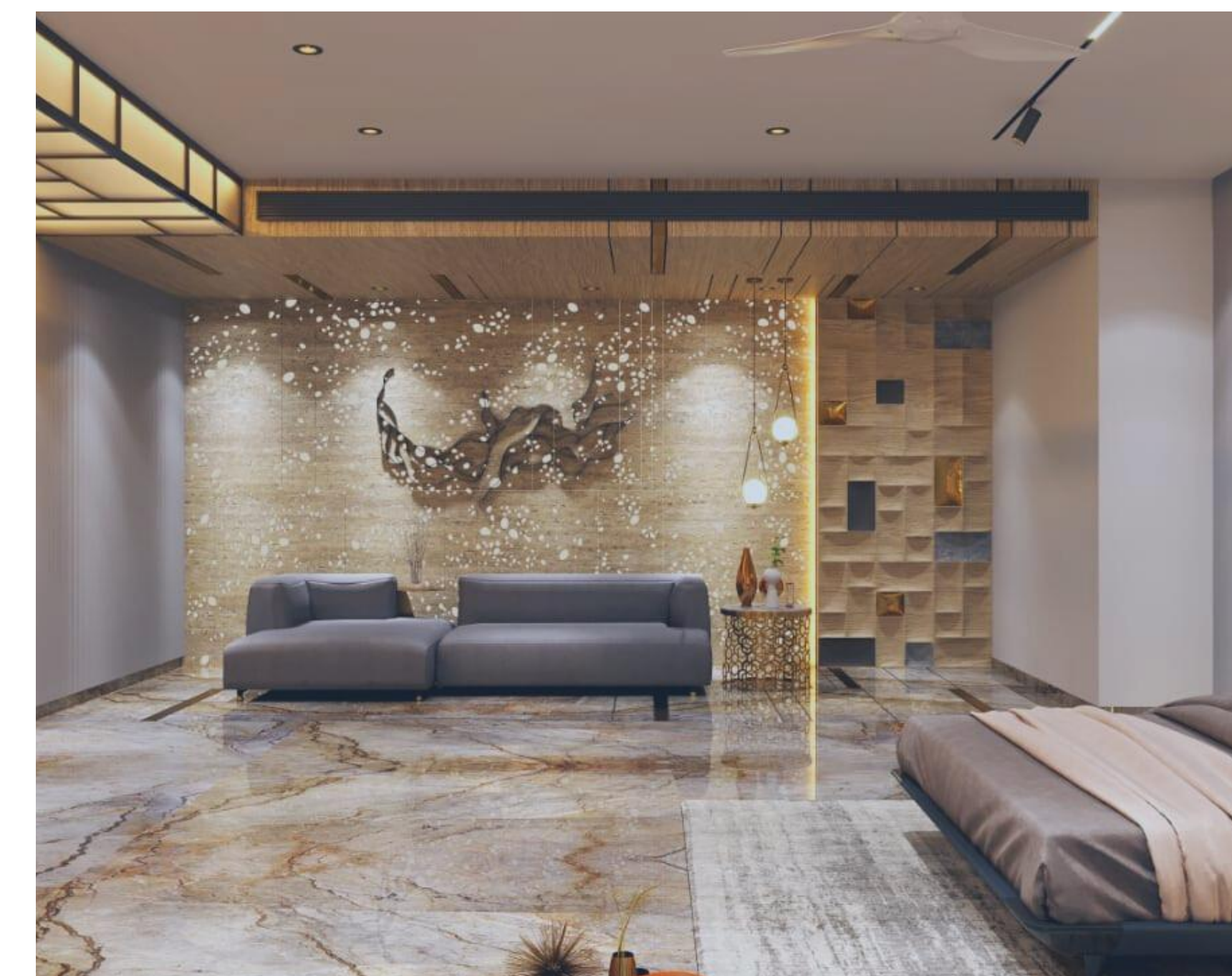
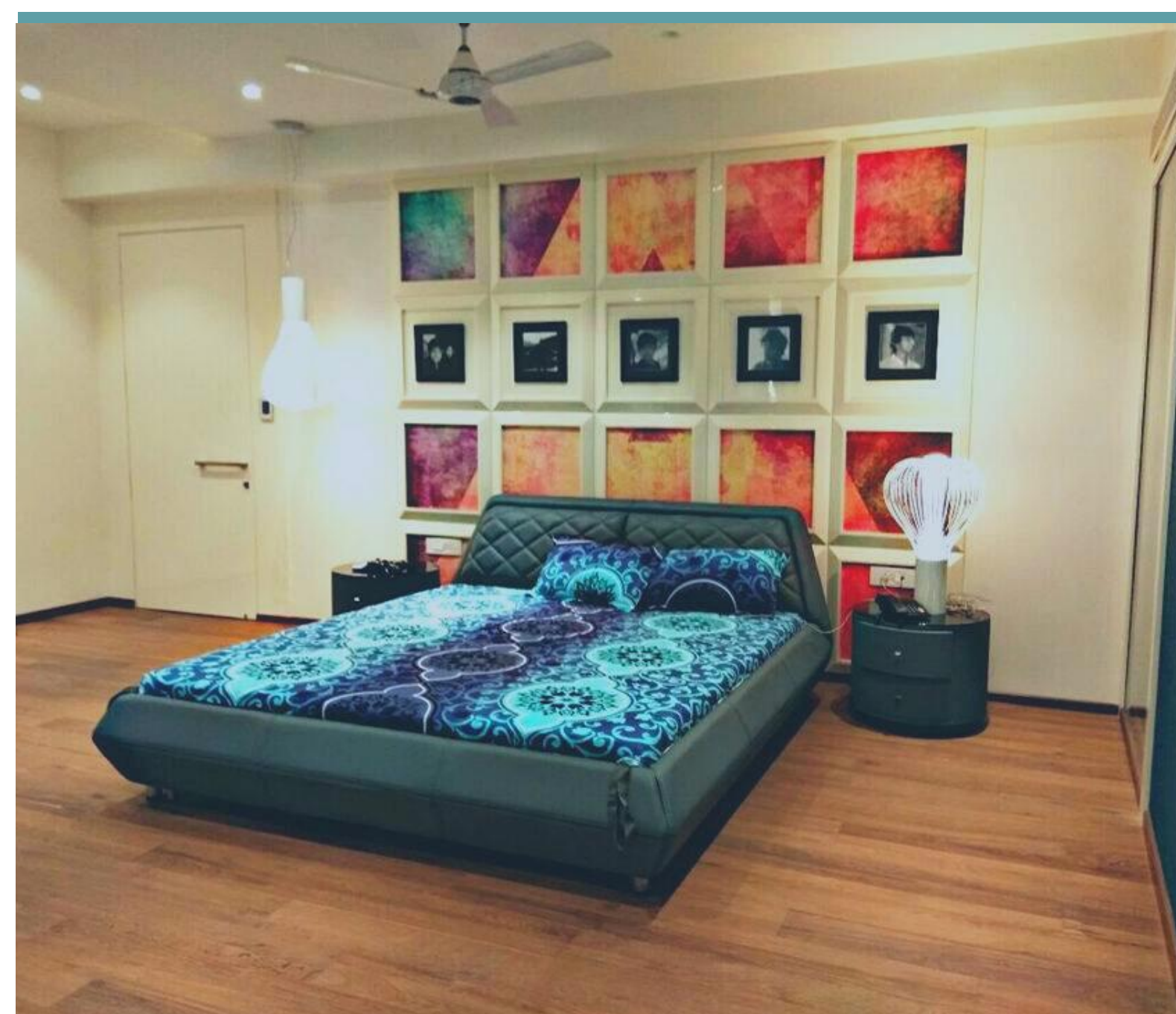
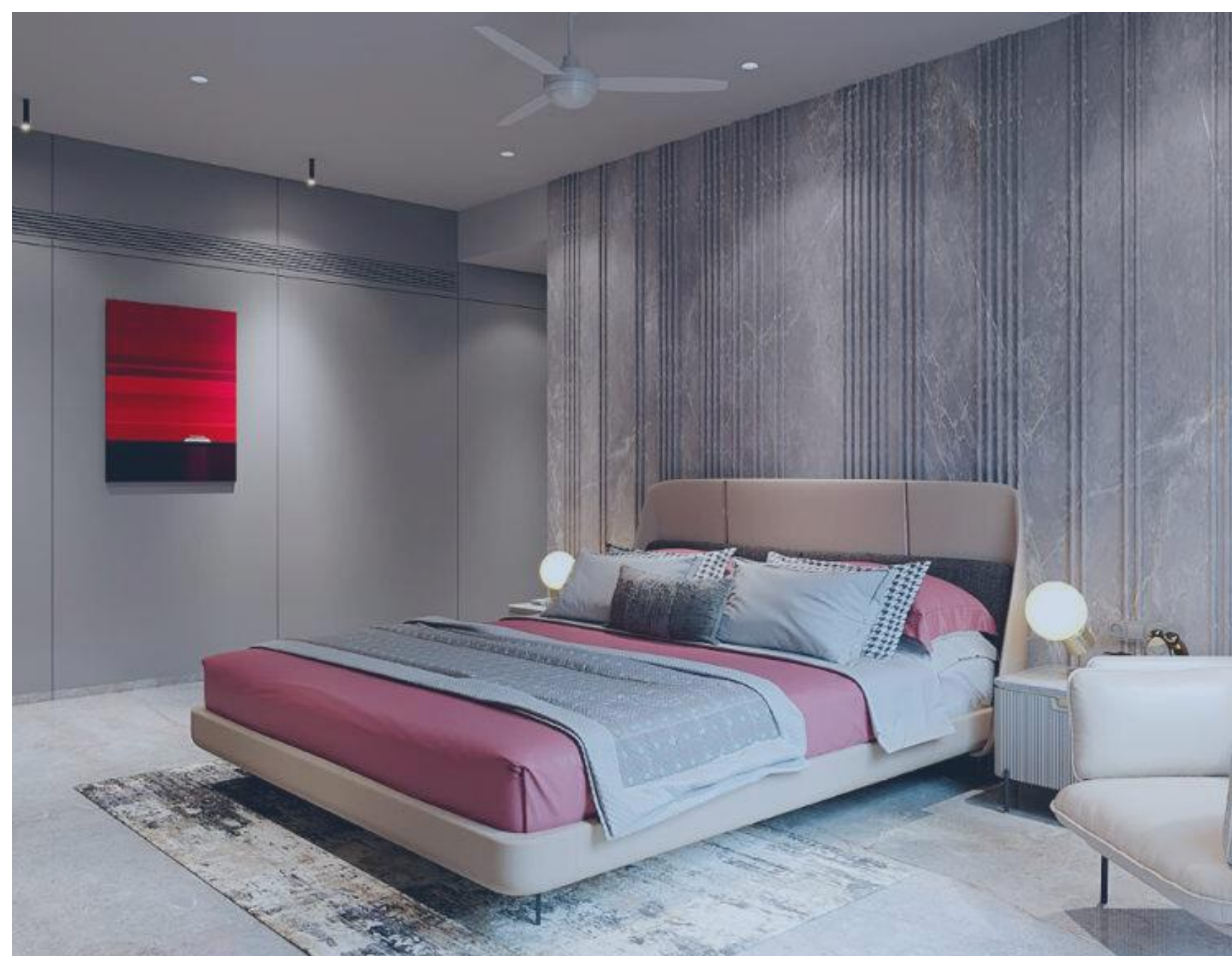
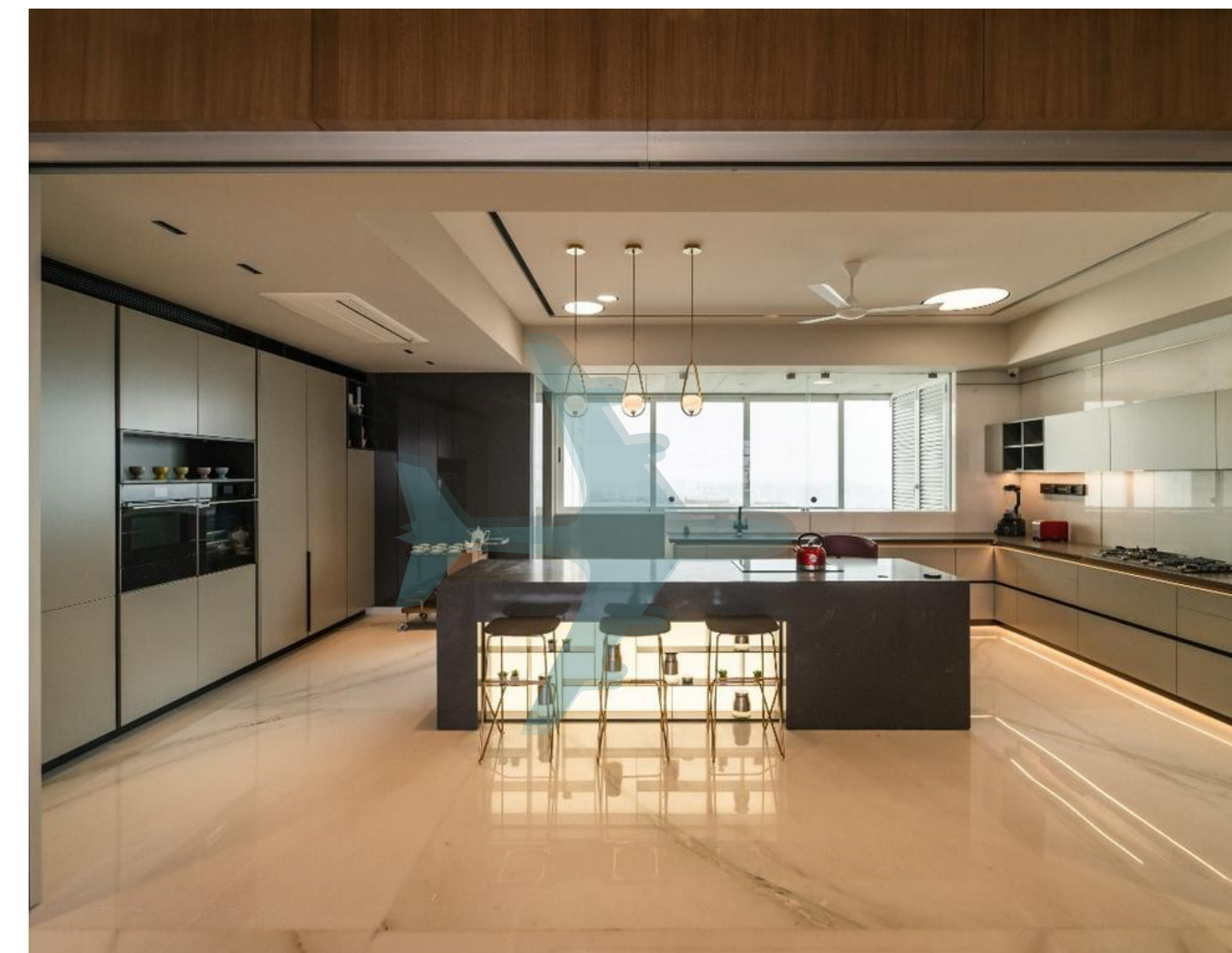
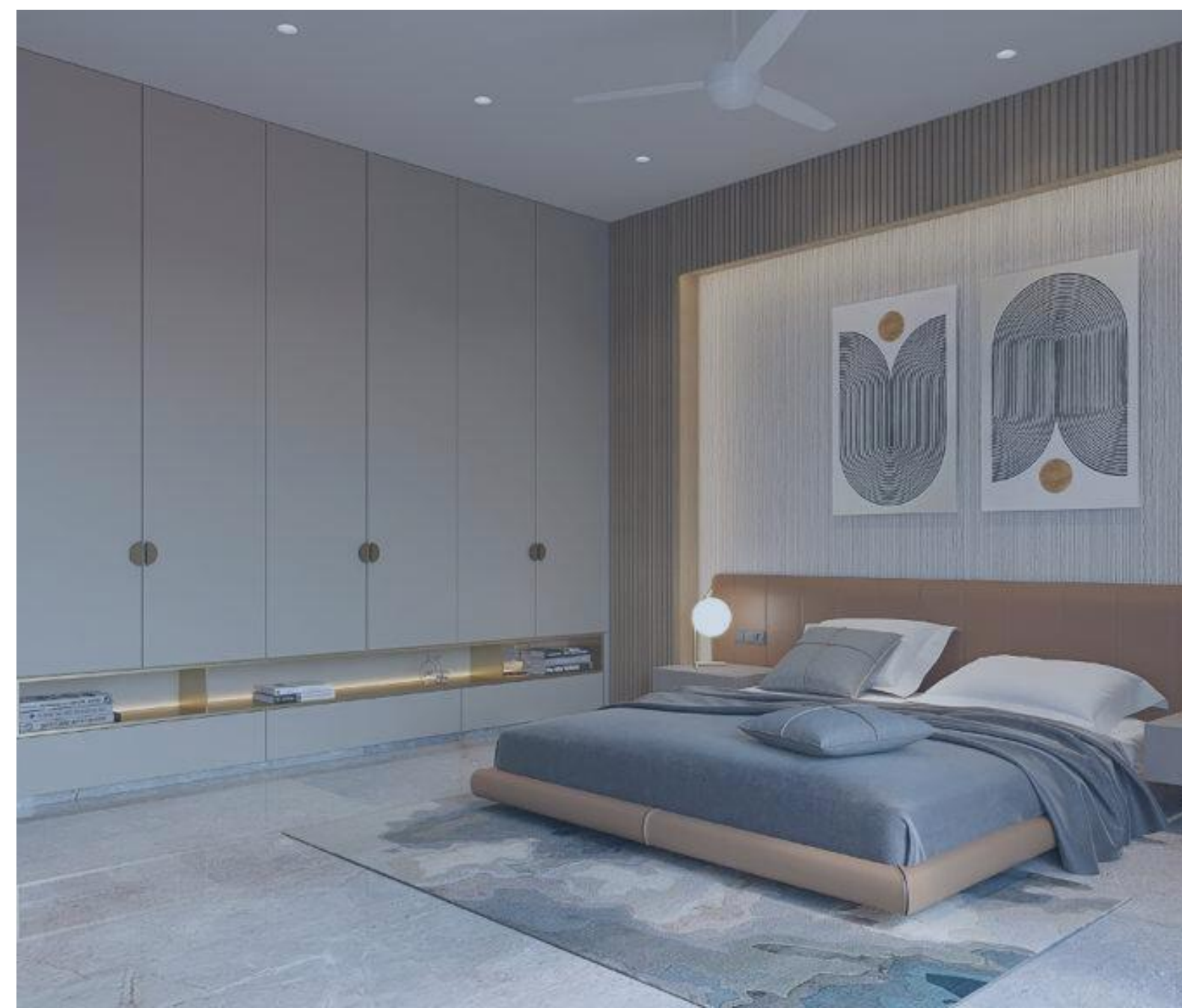






**THE MAGNATE**

working on the edge





**THE MAGNATE**  
working on the edge

# CLIENTELE





# PRESTIGIOUS ARCHITECT

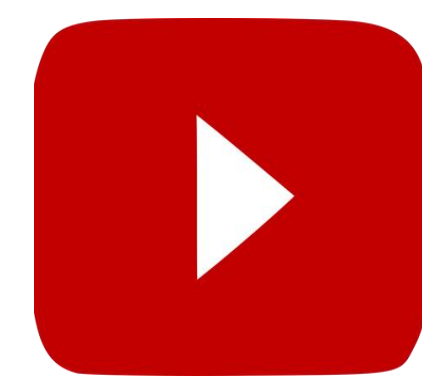




**THE MAGNATE**  
working on the edge



+91 97254 14139



themagnateprojects@gmail.com

**THANK YOU!**